

EACH 39NX UNIT IS UNIQUE

Each unit is assembled from a wide variety of component sections to meet each customer's requirements. There are no standard models. There are eleven standard sizes (07, 09, 11, 13, 17, 21, 26, 32, 39, 49, 61, 74, & 92). Pages 2 and 3 will help you identify the components used to make up your unit.

This catalog identifies parts used in FAN COMPONENTS only. Other catalogs will follow that will identify coil, filter, damper, and other miscellaneous components and casing panels.

Use the table of contents on page 5 to locate appropriate parts list pages and illustrations.



UNIFLEX39

CENTRAL STATION AIR-HANDLING UNITS

39NX

SIZE: 07-92

SERIES: 0

UNIT COMPONENT IDENTIFICATION

The unit identification plate is located on the fan component. The components used to make up a unit are listed in the direction of air flow. A typical unit ID plate is shown below.

PRODUCTION PLANT
 PRODUCTION YEAR
 PRODUCTION WEEK

JOB NUMBER

11 88 T 00014

To determine the type of component, locate the highlighted characters in the component number and refer to the abbreviation index on page 3.

Assemblies contained within a component are listed directly after the component.

EXAMPLE: --- -- -- --

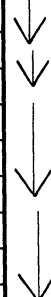
COMPONENT: 39NA7414**BCS**132AL

CONTAINS:

COILS: 28NC2826FBA327AL AND
28NC2828FBA327AL

Carrier Air Conditioning Division of Carrier Corporation	
SERIAL NUMBER	11 88 T 00014
UNIT	39NXB745NSL00014
COMPONENT	39NA74-1 FMB 113NL
COMPONENT	39NA7422 AFS 525NL
MOTOR SUPPLY	99MR1405BA3501A0
DRIVE SUPPLY	39NK4741BL06003
COMPONENT	39NA7414 BCS 132AL
COIL	28NC2826FBA327AL
COIL	28NC2828FBA327AL
COMPONENT	39NAZ4- ZDS 1-4A-
OPTION	39NW74--NN-5022-
OPTION	39NX741---11---
OPTION	39NY74--NN--1N-
OPTION	39NZ7413--191900

Components are listed in direction of air flow.



UNIT SIZE

identified by the 5th & 6th digits of the component numbers.

also by the 6th & 7th digits of the unit number.

The example unit ID plate above identifies a unit consisting of a Filter Mixing Box (**FMB1**), followed by an Air Foil Fan Component (**AFS5**), a Blow-thru Coil Section (**BCS1**), and a Zone Damper Section (**ZDS1**).

WHEN MAKING AN INQUIRY TO RCD, PLEASE PROVIDE THE COMPLETE NUMBER OF THE COMPONENT THAT CONTAINS THE PARTS NEEDING REPLACEMENT, NOT THE UNIT NUMBER.



UNIFLEX39

CENTRAL STATION

AIR-HANDLING UNITS

39NX

SIZE: 07-92

SERIES: 0

COMPONENT ABBREVIATION INDEX

FAN COMPONENTS

AFS3 = AIR FOIL SECTION: Horizontal draw-thru
AFS4 = AIR FOIL SECTION: Vertical draw-thru,
AFS5 = AIR FOIL SECTION: Horizontal blow-thru
AFS7 = AIR FOIL SECTION: Horizontal draw-thru, downblast (32-92 size only)
AFS9 = AIR FOIL SECTION: Blow-thru, top inlet
EAF1 = EXHAUST AIR FOIL (32-92 size only)
EFC1 = EXHAUST FORWARD CURVE (32-92 size only)
FCS3 = FORWARD CURVE SECTION: Horizontal draw-thru
FCS4 = FORWARD CURVE SECTION: Vertical draw-thru
FCS5 = FORWARD CURVE SECTION: Horizontal blow-thru
FCS7 = FORWARD CURVE SECTION: Horizontal draw-thru, downblast (32-92 size only)
FCS9 = FORWARD CURVE SECTION: Blow-thru, top inlet
RAF2 = RETURN AIR FOIL
RAF3 = RETURN AIR FOIL
RFC2 = RETURN FORWARD CURVE
RFC3 = RETURN FORWARD CURVE

COIL COMPONENTS

BCC2 = BYPASS COOLING COIL
BCS1 = BLOW THRU COIL SECTION (horiz. airflow, w/ heat section)
BCS2 = BLOW-THRU COIL SECTION (vert. airflow, w/ heat section)
BCS3 = BLOW-THRU COIL SECTION (horiz. airflow, w/o heat section)
BCS4 = BLOW-THRU COIL SECTION (vert. airflow, w/o heat section)
BCS7 = BLOW-THRU COIL SECTION
BPH1 = BYPASS HEAT SECTION
BPH2 = BYPASS HEAT SECTION
EHS1 = ELECTRIC HEAT SECTION
HRS1 = HEAT RECLAIM SECTION
LCS1 = LARGE COIL SECTION
LCS2 = LARGE COIL SECTION (07-26 size only)
LCS3 = LARGE COIL SECTION (07 26 size only)
MCS1 = MEDIUM COOLING SECTION
MCS2 = MEDIUM COOLING SECTION
MCS3 = MEDIUM COOLING SECTION
MHS1 = MEDIUM HEATING SECTION
SHS1 = SHORT HEATING SECTION
VBP1 = VERTICAL BYPASS SECTION (32-92 size only)
VBP2 = VERTICAL BYPASS SECTION (32-92 size only)
VBP3 = VERTICAL BYPASS SECTION (32-92 size only)
VCS1 = VERTICAL COIL SECTION
VCS2 = VERTICAL COIL SECTION
VCS3 = VERTICAL COIL SECTION
VHS1 = VERTICAL HEAT SECTION (07-26 size only)
VRH1 = VERTICAL REHEAT

FILTER COMPONENTS

ANG1 = ANGLE FILTER
ANG5 = ANGLE FILTER
BCF1 = BAG / CARTRIDGE FILTER
BCF2 = BAG / CARTRIDGE FILTER
BCF3 = BAG / CARTRIDGE FILTER
FLT1 = FLAT FILTER
FLT2 = FLAT FILTER

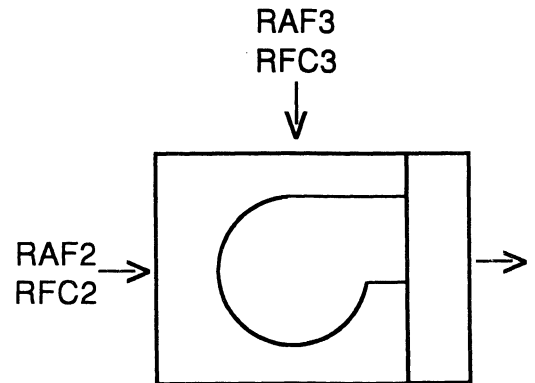
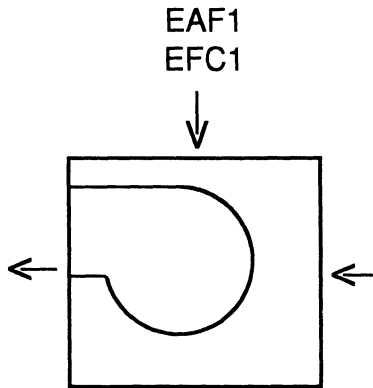
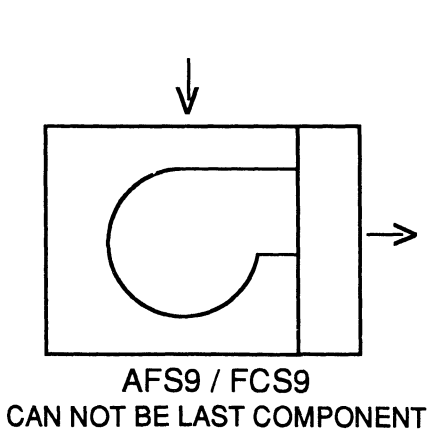
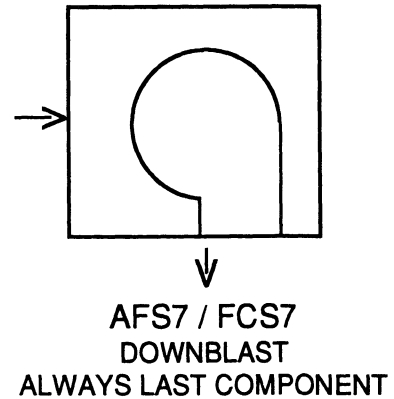
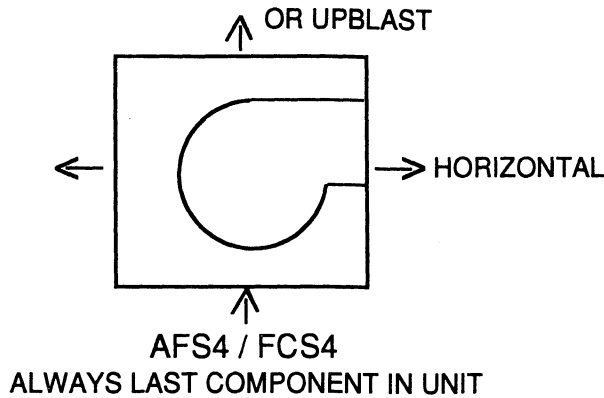
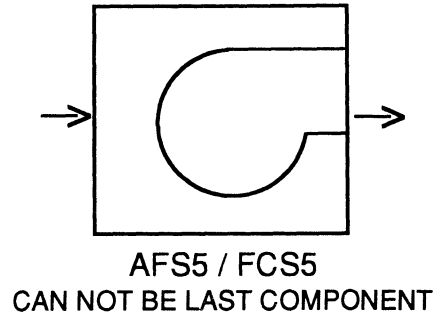
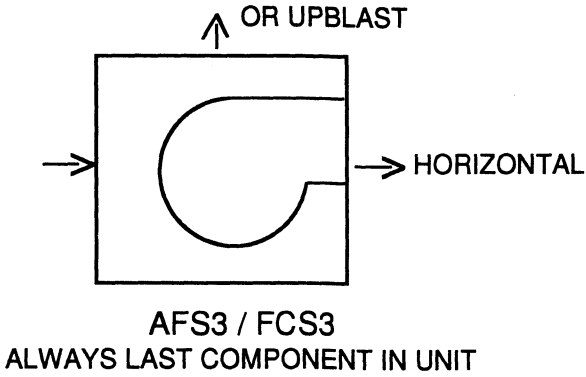
DAMPER COMPONENTS

ABX1 = BLENDER BOX
EXB1 = EXHAUST BOX
FBP1 = FACE BYPASS
FMB1 = FILTER MIXING BOX
FMB2 = FILTER MIXING BOX
MXB1 = MIXING BOX
MXB2 = MIXING BOX
MXB3 = MIXING BOX (32-92 size only)
MXB5 = MIXING BOX
ZDS1 = ZONE DAMPER SECTION
ZDS2 = ZONE DAMPER SECTION

MISC. COMPONENTS

ACC1 = ACCESS SECTION
ACC2 = ACCESS SECTION
DIF2 = DIFFUSER
PIC1 = PIC CONTROLS (32-92 size only)
PIC2 = PIC CONTROLS (32-92 size only)
PLN1 = PLENUM
PLN2 = PLENUM
PLN6 = PLENUM
PLN7 = PLENUM

FAN COMPONENT CONFIGURATIONS





UNIFLEX39

FAN COMPONENTS

39NX

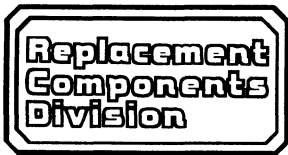
SIZE: 07-92

SERIES: 0

TABLE OF CONTENTS

	PAGE:
WHEEL / SHAFT / BEARINGS	
List for Air Foil fans	6
List for Forward Curve fans	7
illustrations for Air Foil & Forward Curve	8
AIR FOIL FAN COMPONENT PARTS	
Parts for 07-13 size units	9
Parts for 17-26 size units	10
illustrations for 07-26 size units	11-12
Parts for 32-92 size units	13-14
illustrations for 32-92 size units	15-16
FORWARD CURVE FAN COMPONENT PARTS	
Parts for 07-13 size units	17
Parts for 13-26 size units	18
illustrations for 07-26 size units	19-20
Parts for 32-92 size units	21-22
illustrations for 32-92 size units	23-24
MOTOR MOUNTING PLATES	
standard & auxiliary parts and illustrations	25-26
ISOLATOR SPRINGS	
isolator assembly parts & illustrations	27
spring selection instructions & spring locations	28
spring selection charts	29-39

FAN MOTORS: Due to the enormous number of possible unit combinations a standard replacement motor listing is not possible. However, a suitable replacement motor may be found in your Totaline parts catalog.



WHEEL / SHAFT / BEARINGS FOR AIRFOIL FAN COMPONENTS

39NX

SIZE: 07-92
SERIES: 0

SEE ILLUSTRATION ON PAGE 8

ITEM	PART DESCRIPTION	07	09	11	13	17
		UNIT SIZE	UNIT SIZE	UNIT SIZE	UNIT SIZE	UNIT SIZE
	BLOWER WHEEL					
1A	STANDARD WHEEL *	LA22NX135	LA22NX150	LA22NX165	LA22NX182	LA22NX200
1B	CONTINUOUS WELD WHEEL *	LA22NY135	LA22NY150	LA22NY165	LA22NY182	LA22NY200
	SHAFT, FAN					
2A	FANS WITH STANDARD BEARINGS #	39NA50001118	39NA50001120	39NA50001122	39NA50001124	39NA50001126
2B	FANS WITH LONG LIFE BEARINGS #	X	X	X	X	X
	BEARINGS					
3A	STD. BEARING, DRIVE END	KT63ZZ118	KT63ZZ120	->	KT63ZZ139	->
3B	STD. BEARING, OPPOSITE END	KT63ZZ118	KT63ZZ120	->	KT63ZZ139	->
3C	LONG LIFE BEARING, DRIVE END	X	X	X	X	X
3D	LONG LIFE BEARING, OPPOSITE END	X	X	X	X	X

ITEM	PART DESCRIPTION	21	26	32	39
		UNIT SIZE	UNIT SIZE	UNIT SIZE	UNIT SIZE
	BLOWER WHEEL				
1A	STANDARD WHEEL	LA22NX222	LA22NX245	LA22NX270	LA22NX300
1B	CONTINUOUS WELD WHEEL	LA22NY222	LA22NY245	LA22NY270	LA22NY300
	FAN SHAFT				
2A	FANS WITH STANDARD BEARINGS	39NA50001128	39NA50001130	39NA50001105	X
2B	FANS WITH LONG LIFE BEARINGS	X	X	39NA50001110	39NA50001104
	BEARINGS				
3A	STD. BEARING, DRIVE END	KT63ZZ140	->	KT63ZZ116	X
3B	STD. BEARING, OPPOSITE END	KT63ZZ140	->	KT63ZZ116	X
3C	LONG LIFE BEARING, DRIVE END	X	X	KT73ZZ116	->
3D	LONG LIFE BEARING, OPPOSITE END	X	X	KT63ZZ116	KT63ZZ118

ITEM	PART DESCRIPTION	49	61	74	92
		UNIT SIZE	UNIT SIZE	UNIT SIZE	UNIT SIZE
	BLOWER WHEEL				
1A	STANDARD WHEEL	LA22NX365	X	X	X
1B	CONTINUOUS WELD WHEEL	LA22NY365	LA22NY402	LA22NY445	->
	FAN SHAFT				
2A	FANS WITH STANDARD BEARINGS	X	X	X	X
2B	FANS WITH LONG LIFE BEARINGS	39NA50001103	39NA50001102	39NA50001101	->
	BEARINGS				
3A	STD. BEARING, DRIVE END	X	X	X	X
3B	STD. BEARING, OPPOSITE END	X	X	X	X
3C	LONG LIFE BEARING, DRIVE END	KT73ZZ120	->	KT73ZZ156	->
3D	LONG LIFE BEARING, OPPOSITE END	KT63ZZ120	->	->	->

* **STANDARD OR CONTINUOUS WELD WHEEL?** To determine if your unit has a standard or continuous weld wheel refer to the unit's ID plate (ref. page 2) and look for an **option** beginning with **39NW** _____. If a number "2" appears in the 14th or 15th position then the continuous weld wheel is used. A number "1" indicates a standard wheel.

Position 1 2 3 4 5 6 7 8 9 10 11 12 13 14 15 16
Option taken from example ID plate on page 2 3 9 N W 7 4 - - N N - 5 0 2 2 -

The 14th position identifies the type of wheel used on supply air fan components.
The 15th position identifies the type of wheel used on return air or exhaust air fan components.
The above example indicates that continuous weld wheels would be used.

STANDARD OR LONG LIFE BEARINGS?

To determine if your unit has standard or long life bearings refer to the **Fan Component** number on the unit's ID plate. A number "1" in the 13th position indicates standard bearings. A number "2" indicates long life bearings.

This example from the ID plate on page 2 would indicate long life bearings

39NA7422AFS525NL



WHEEL / SHAFT / BEARINGS FOR FORWARD CURVE FAN COMPONENTS

39NX

SIZE: 07-92

SERIES: 0

SEE ILLUSTRATION ON PAGE 8

ITEM	PART DESCRIPTION	07	09	11	13
		UNIT SIZE	UNIT SIZE	UNIT SIZE	UNIT SIZE
	BLOWER WHEEL				
1	FORWARD CURVE BLOWER WHEEL	LA22LA133	LA22LA153	LA22LA154	LA22LA186
	FAN SHAFT				
2A	FANS WITH INLET GUIDE VANES *	39NA50001119	39NA50001121	39NA50001123	39NA50001125
2B	FANS WITHOUT INLET GUIDE VANES *	39NA50001119	39NA50001121	39NA50001123	39NA50001125
	BEARINGS				
3A	BEARING, DRIVE END	KT63ZZ098	->	->	KT63ZZ118
3B	BEARING, OPPOSITE END	KT63ZZ098	->	->	KT63ZZ118

ITEM	PART DESCRIPTION	17	21	26	32
		UNIT SIZE	UNIT SIZE	UNIT SIZE	UNIT SIZE
	BLOWER WHEEL				
1	FORWARD CURVE BLOWER WHEEL	LA22LA106	LA22LA107	LA22LA108	LA22LA249
	FAN SHAFT				
2A	FANS WITH INLET GUIDE VANES	39NA50001127	39NA50001129	39NA50001131	39NA50001107
2B	FANS WITHOUT INLET GUIDE VANES	39NA50001127	39NA50001129	39NA50001131	39NA50001106
	BEARINGS				
3A	BEARING, DRIVE END	KT63ZZ118	KT63ZZ120	->	KT63ZZ139
3B	BEARING, OPPOSITE END	KT63ZZ118	KT63ZZ120	->	KT63ZZ139

ITEM	PART DESCRIPTION	39	49	61
		UNIT SIZE	UNIT SIZE	UNIT SIZE
	BLOWER WHEEL			
1	FORWARD CURVE BLOWER WHEEL	LA22LA276	LA22LA302	LA22LA362
	FAN SHAFT			
2A	FANS WITH INLET GUIDE VANES	39NA50001109	39NA50001132	->
2B	FANS WITHOUT INLET GUIDE VANES	39NA50001108	39NA50001112	->
	BEARINGS			
3A	BEARING, DRIVE END	KT63ZZ138	KT73ZZ120	->
3B	BEARING, OPPOSITE END	KT63ZZ139	KT63ZZ120	->

*** WITH OR WITHOUT INLET GUIDE VANES?**

To determine whether or not your unit has Inlet Guide Vanes refer to the **Fan Component** number on the unit's ID plate (ref. example on page 2).

A number "1" in the 8th position indicates unit **does not have** Inlet Guide Vanes.

A number "2" indicates the unit **has** Inlet Guide Vanes.

EXAMPLE: From example ID plate on page 2.

39NA742**2**AFS515NL

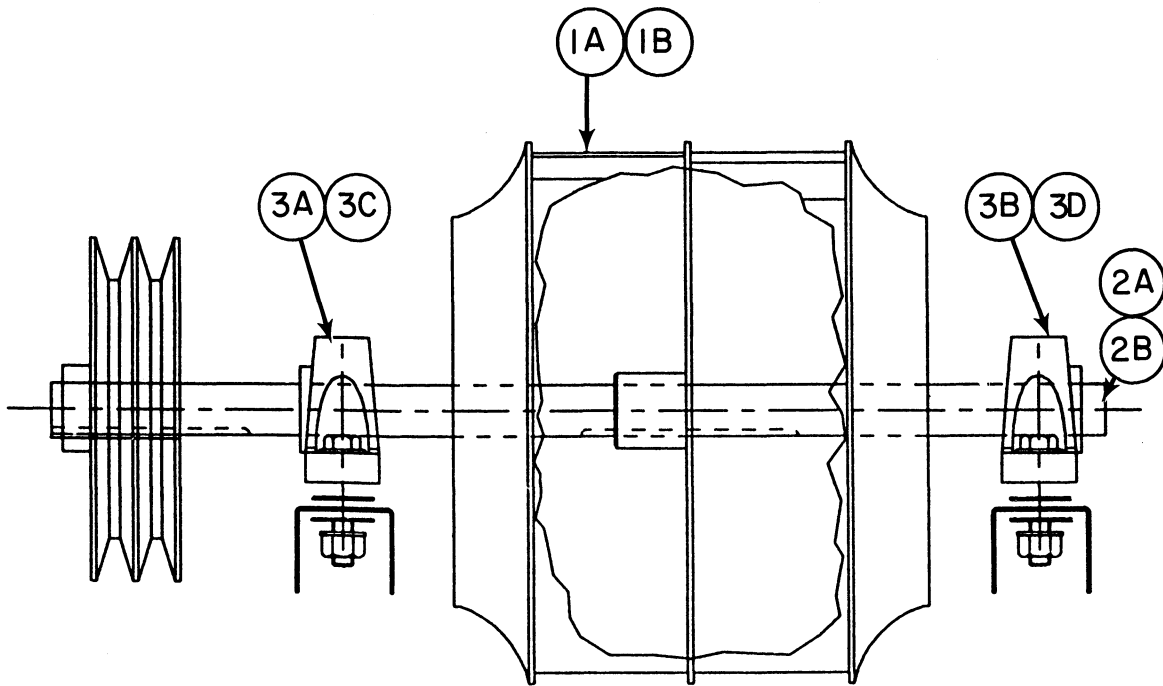
This Fan Component number would indicate unit has Inlet Guide Vanes.

WHEEL / SHAFT / BEARINGS
FOR ALL AIR FOIL AND
FORWARD CURVE FAN COMPONENTS

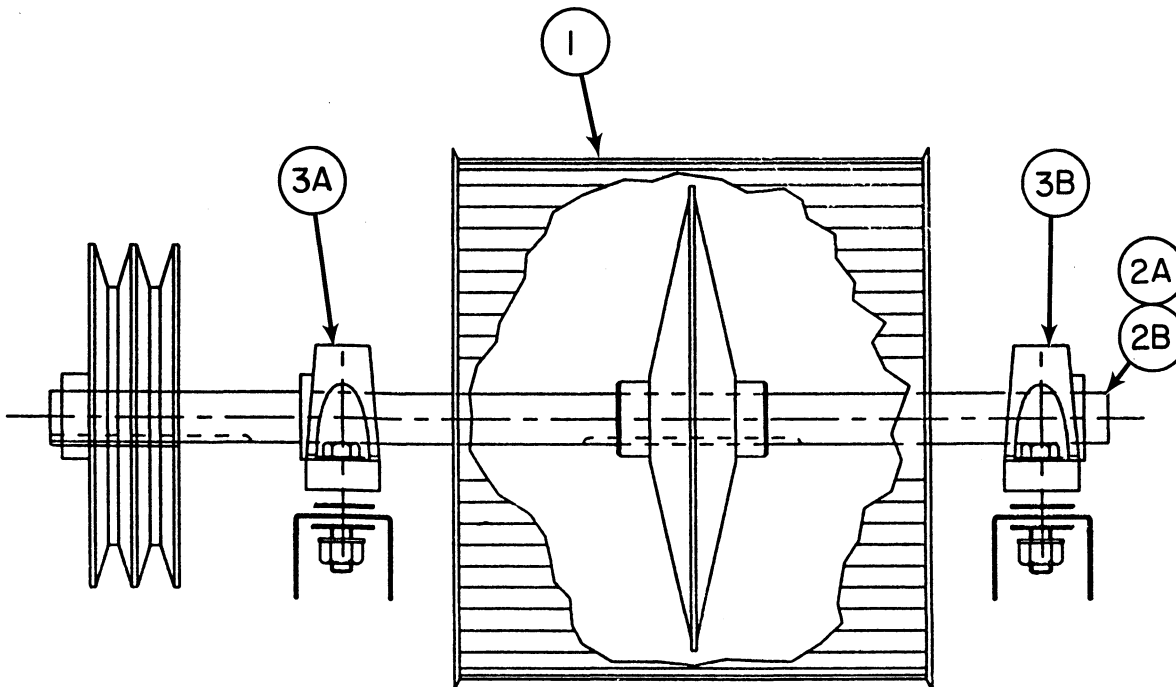
39NX

SIZE: 07-92

SERIES: 0



AIR FOIL FANS



FORWARD CURVE FANS



AIR FOIL FAN PARTS FOR 07-13 SIZE UNITS

39NX

SIZE: 07-92

SERIES: 0

ITEM	PART DESCRIPTION	07		09		11		13	
			SIZE UNIT		SIZE UNIT		SIZE UNIT		SIZE UNIT
BASE FRAME ASSEMBLY									
1A	SUPPORT CHANNEL UNITS W/ ISO *	(4)	39NA50002303	(4)	->	(4)	->	(4)	->
1B	SUPPORT CHANNEL UNITS W/O ISO *	(4)	39NA50002304	(4)	->	(4)	->	(4)	->
2	BASE CHANNEL	(2)	39NA50002525	(2)	39NA50002524	(2)	39NA50002523	(2)	39NA50002522
3	MOTOR CHANNEL, NARROW		39NA50002424		39NA50002423		->		39NA50002422
3A	MOTOR CHANNEL, WIDE		X		X		X		39NA50002421
4	MOTOR CHANNEL, FANS W/O ISO		39NA50030912		39NA50030911		->		39NA50030910
<p>* ISO = ISOLATOR SPRINGS</p> <p>To determine if your unit has isolator springs refer to the fan component number on the unit's ID plate. A number "1" in the 7th position indicates no isolator springs. A number "2" indicates unit has isolator springs.</p>									
FAN SCROLL ASSEMBLIES									
FAN SCROLLS									
FANS W/ ISOLATOR SPRINGS									
10A	SIDE PLATE, RIGHT		39NA50001045		39NA50001051		39NA50001057		39NA50001060
10B	SIDE PLATE, LEFT		39NA50001046		39NA50001052		39NA50001058		39NA50001061
10C	SCROLL WRAPPER		39NA50001345		39NA50001341		39NA50001337		39NA50001333
FANS W/O ISOLATOR SPRINGS									
10D	SIDE PLATES	(2)	39NA50001047	(2)	39NA50001053	(2)	39NA50001059	(2)	39NA50001062
10E	SCROLL WRAPPER		39NA50001346		39NA50001342		39NA50001338		39NA50001334
11	CUTOFF PLATE		39NA50001511		39NA50001513		39NA50001515		39NA50001517
12	RETAINING ROD		3/8-16 X 19 1/4"		3/8-16 X 21 1/4"		3/8-16 X 23 1/2"		3/8-16 X 26"
13	FAN ANGLE		X		X		X		X
14	SUPPORT PANEL		X		X		X		X
15	INLET RING (UNITS W/O IGV)	(2)	LA71ZU123	(2)	LA71ZU135	(2)	LA71ZU150	(2)	LA71ZU165
BEARING SUPPORT FRAME									
20	CHANNEL, BEARING (RIGHT)		39NA50000712		39NA50000714		->		39NA50000716
21	CHANNEL, BEARING (LEFT)		39NA50000724		39NA50000725		->		39NA50000726
22	CHANNEL, A-FRAME (RIGHT)		39NA50000821		39NA50000825		->		39NA50000829
23	CHANNEL, A-FRAME (LEFT)		39NA50000822		39NA50000826		->		39NA50000830
24	BASE CHANNEL	(2)	39NA50000919	(2)	39NA50000921	(2)	->	(2)	39NA50000923
25	SPACER PLATE	(6)	39NA50006902	(6)	->	(6)	->	(6)	->
INLET GUIDE VANE ASSEMBLIES									
30	CW VANES		LA73ZV123		LA73ZV136		LA73ZV150		LA73ZV166
31	CCW VANES		LA73ZX123		LA73ZX136		LA73ZX150		LA73ZX166
32	BEARING	(2)	KT63QZ042	(2)	->	(2)	->	(2)	->
33	COLLAR	(2)	KT51DC001	(2)	->	(2)	->	(2)	->
34	SHAFT (BETWEEN ASSYS.)		1/2 DIA X 30 3/8"		1/2 DIA X 32 3/8"		1/2 DIA X 35 1/2"		1/2 DIA X 37 1/2"
35	CRANK ARM	(2)	39NA50030305	(2)	->	(2)	->	(2)	->
36	CRANK ARM		39NA50030303		->		->		->
37	ANGLE, LINKAGE	(2)	39NA50074501	(2)	39NA50074502	(2)	39NA50074503	(2)	->
38	BEARING	(4)	KT58BZ052	(4)	->	(4)	->	(4)	->
39	SPACER	(4)	39NA50054002	(4)	->	(4)	->	(4)	->
DUCT ASSEMBLY									
50	ZEE DUCT, TOP/BOTTOM	(2)	39NA50002910	(2)	39NA50002912	(2)	39NA50002914	(2)	39NA50002916
51	DUCT CHANNEL, TOP/BOTTOM	(2)	39NA50002711	(2)	39NA50002713	(2)	39NA50002715	(2)	39NA50002717
52	ZEE DUCT, SIDES	(2)	39NA50003011	(2)	39NA50003013	(2)	39NA50003015	(2)	39NA50003017
53	DUCT CHANNEL, SIDES	(2)	39NA50002811	(2)	39NA50002813	(2)	39NA50002815	(2)	39NA50002817

ILLUSTRATIONS ON PAGES 11 & 12



AIR FOIL FAN PARTS FOR 17-26 SIZE UNITS

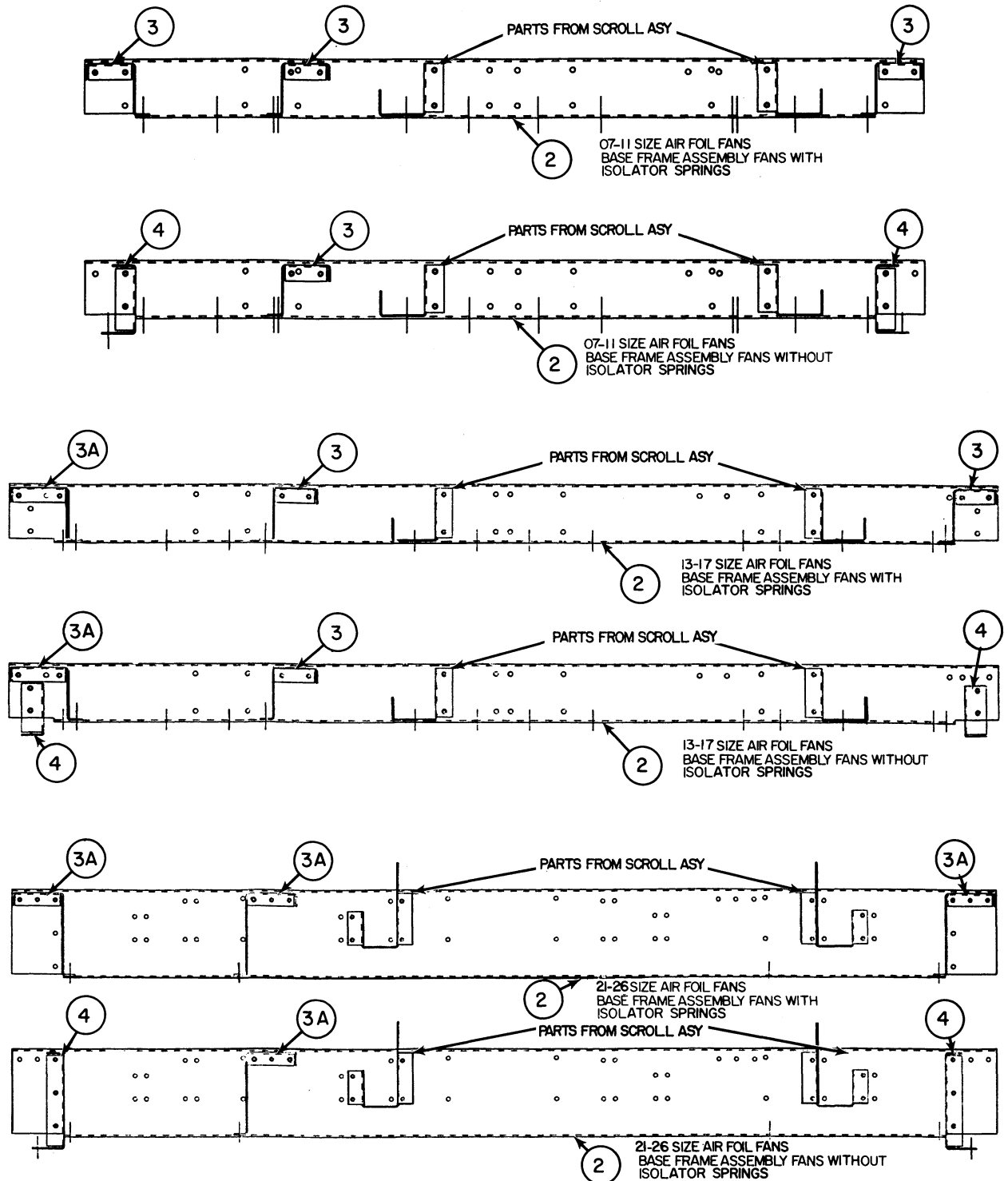
39NX

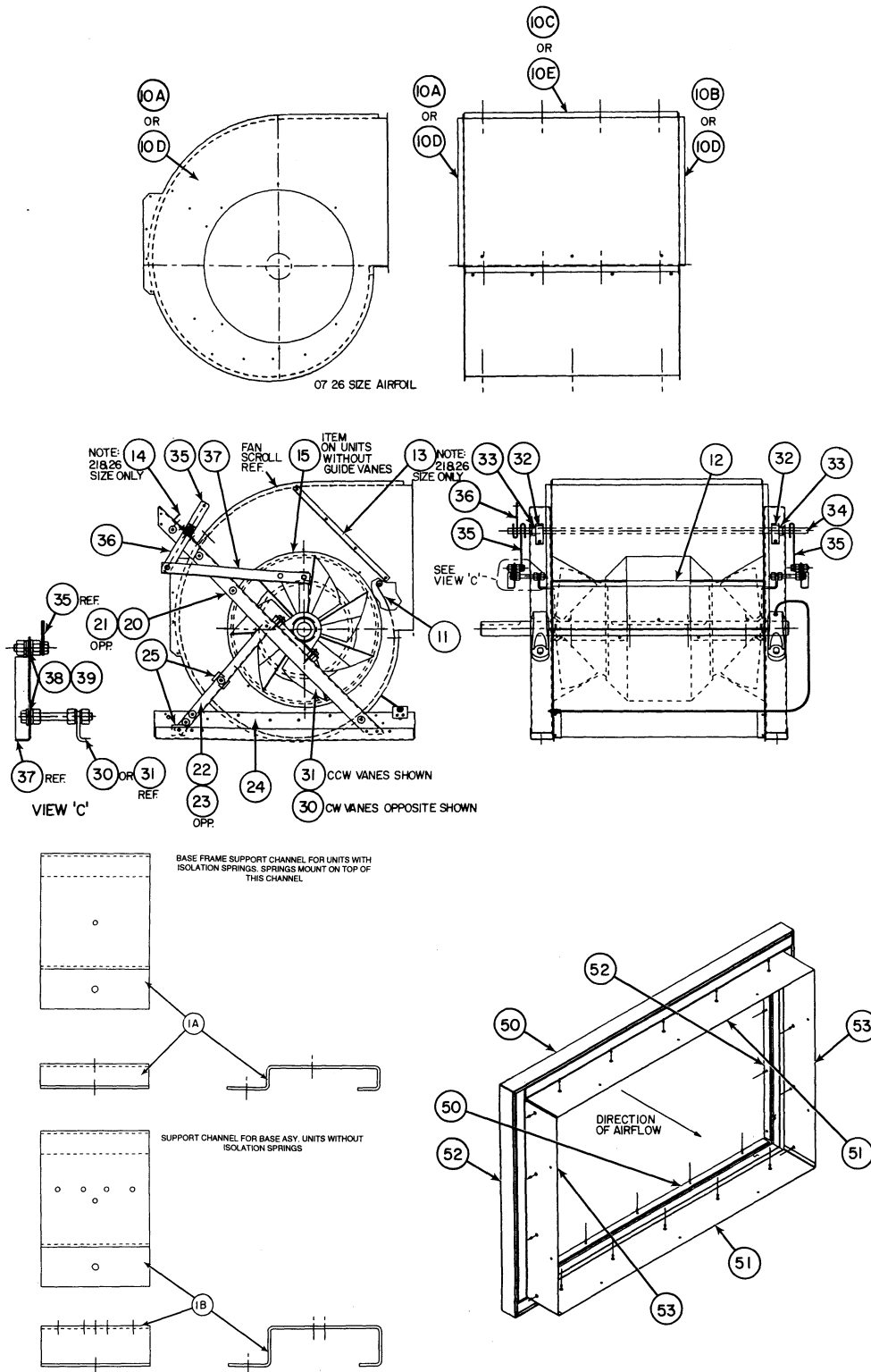
SIZE: 07-92

SERIES: 0

ITEM	PART DESCRIPTION	17		21		26	
			SIZE UNIT		SIZE UNIT		SIZE UNIT
BASE FRAME ASSEMBLY							
1A	SUPPORT CHANNEL UNITS W/ ISO *	(4)	39NA50002303		X		X
1B	SUPPORT CHANNEL UNITS W/O ISO *	(4)	39NA50002304	(4)	->	(4)	->
2	BASE CHANNEL	(2)	39NA50002521	(2)	39NA50002520	(2)	39NA50002519
3	MOTOR CHANNEL, NARROW		39NA50002420		X		X
3A	MOTOR CHANNEL, WIDE		39NA50002419		39NA50002418		39NA50002417
4	MOTOR CHANNEL, FANS W/O ISO		39NA50030909		39NA50030908		39NA50030904
* ISO = ISOLATOR SPRINGS							
To determine if your unit has isolator springs refer to the fan component number on the unit's ID plate.							
A number "1" in the 7th position indicates no isolator springs. A number "2" indicates unit has isolator springs.							
FAN SCROLL ASSEMBLIES							
FAN SCROLLS							
FANS W/ ISOLATOR SPRINGS							
10A	SIDE PLATE, RIGHT		39NA50001066		39NA50001072		39NA50001078
10B	SIDE PLATE, LEFT		39NA50001067		39NA50001073		39NA50001079
10C	SCROLL WRAPPER		39NA50001329		39NA50001325		39NA50001321
FANS W/O ISOLATOR SPRINGS							
10D	SIDE PLATES	(2)	39NA50001068	(2)	39NA50001074	(2)	39NA50001080
10E	SCROLL WRAPPER		39NA50001330		39NA50001326		39NA50001322
11	CUTOFF PLATE		39NA50001519		39NA50001521		39NA50001523
12	RETAINING ROD		3/8-16 X 28 3/4"		3/8-16 X 31 1/2"		3/8-16 X 35"
13	FAN ANGLE		X	(2)	39NA50065801	(2)	->
14	SUPPORT PANEL		X		39NA50001221		39NA50001222
15	INLET RING (UNITS W/O IGV)	(2)	LA71ZU182	(2)	LA71ZU200	(2)	LA71ZU222
BEARING SUPPORT FRAME							
20	CHANNEL, BEARING (RIGHT)		39NA50000718		39NA50000720		39NA50000722
21	CHANNEL, BEARING (LEFT)		39NA50000727		39NA50000728		39NA50000729
22	CHANNEL, A-FRAME (RIGHT)		39NA50000833		39NA50000837		39NA50000839
23	CHANNEL, A-FRAME (LEFT)		39NA50000834		39NA50000838		39NA50000840
24	BASE CHANNEL	(2)	39NA50000925	(2)	39NA50000927	(2)	39NA50000929
25	SPACER PLATE	(6)	39NA50006902	(6)	->	(6)	->
INLET GUIDE VANE ASSEMBLIES							
30	CW VANES		LA73ZV183		LA73ZV201		LA73ZV223
31	CCW VANES		LA73ZX183		LA73ZX201		LA73ZX223
32	BEARING	(2)	KT63QZ042	(2)	->	(2)	->
33	COLLAR	(2)	KT51DC001	(2)	->	(2)	->
34	SHAFT (BETWEEN ASSYS.)		1/2 DIA X 40"		1/2 DIA X 44"		1/2 DIA X 47"
35	CRANK ARM	(2)	39NA50030305	(2)	->	(2)	->
36	CRANK ARM		39NA50030303		->		->
37	ANGLE, LINKAGE	(2)	39NA50074504	(2)	39NA50074505	(2)	39NA50074506
38	BEARING	(4)	KT58BZ052	(4)	->	(4)	->
39	SPACER	(4)	39NA50054002	(4)	->	(4)	->
DUCT ASSEMBLY							
50	ZEE DUCT, TOP/BOTTOM	(2)	39NA50002918	(2)	39NA50002920	(2)	39NA50002922
51	DUCT CHANNEL, TOP/BOTTOM	(2)	39NA50002719	(2)	39NA50002721	(2)	39NA50002723
52	ZEE DUCT, SIDES	(2)	39NA50003019	(2)	39NA50003021	(2)	39NA50003023
53	DUCT CHANNEL, SIDES	(2)	39NA50002819	(2)	39NA50002821	(2)	39NA50002823

ILLUSTRATIONS ON PAGES 11 & 12







AIR FOIL FAN PARTS FOR 32-92 SIZE UNITS

39NX

SIZE: 07-92

SERIES: 0

ITEM	PART DESCRIPTION	32	39	49	61	74	92
		UNIT SIZE	UNIT SIZE	UNIT SIZE	UNIT SIZE	UNIT SIZE	UNIT SIZE
BASE FRAME ASSEMBLY							
1A	CHANNEL SUPPORT 300MM	(4) 39NA50002302	(2) ->	(2) ->	(4) ->	X	(4) 39NA50002302
1B	CHANNEL SUPPORT 400MM	(2) 39NA50002301	(4) ->	(4) ->	(4) ->	(6) ->	(4) ->
2A	BASE CHNL., horiz/upblast units	(2) 39NA50002503	(2) 39NA50002504	(2) 39NA50002507	(2) 39NA50002506	(2) 39NA50002501	(2) ->
2B	BASE CHNL., downblast units	(2) 39NA50002514	(2) 39NA50002513	39NA50002512	(2) 39NA50002511	(2) 39NA50002509	(2) 39NA50002501
3	MOTOR CHANNEL	39NA50002404	39NA50002410	39NA50002408	39NA50002403	39NA50002402	39NA50002401
4	RAIL BRACKET	39NA50002203	->	39NA50002204	->	X	X
5	MOTOR CHANNEL, Fans w/ ISO *	39NA50002405	39NA50002409	39NA50002407	39NA50002406	X	X
6A	MOTOR CHANNEL, Fans w/o ISO	(2) 39NA50030901	(2) 39NA50030902	(2) 39NA50030903	(2) 39NA50030905	39NA50030906	39NA50030907
6B	MOTOR CHANNEL, Fans w/o ISO	39NA50002416	39NA50002415	39NA50002414	39NA50002413	39NA50002412	39NA50002411
7	RAIL BRACKET	(2) 39NA50002202	(2) ->	(2) 39NA50002205	(2) ->	39NA50002207	->
<p>* ISO = ISOLATOR SPRINGS</p> <p>To determine if your unit has isolator springs refer to the fan component number on the unit's ID plate. A number "1" in the 7th position indicates no isolator springs. A number "2" indicates unit has isolator springs.</p>							
FAN SCROLLS For fans without ISO and for downblast units							
10	SCROLL ASSEMBLY:	39NA40006412	39NA40006411	39NA40006410	39NA40006409	39NA40006408	39NA40006407
	INCLUDES:						
11	SIDE PLATE, RIGHT	39NA50001034	39NA50001032	39NA50001030	39NA50001028	39NA50001044	X
12	SIDE PLATE, LEFT	39NA50001034	39NA50001032	39NA50001030	39NA50001028	39NA50001044	X
13	SIDE PLATE, REAR	X	X	X	X	X	(2) 39NA50000501
14	SIDE PLATE, FRONT	X	X	X	X	X	(2) 39NA50000603
15	SCROLL, ONE PIECE	39NA50001316	X	X	X	X	X
16	SCROLL, 2 PC. TOP	X	39NA50001315	39NA50001314	39NA50001313	39NA50001312	39NA50001311
17	SCROLL, 2 PC. BOTTOM	X	39NA50001415	39NA50001414	39NA50001413	39NA50001412	39NA50001411
18	CUTOFF PLATE, SCROLL	(2) 39NA50001505	(2) 39NA50001504	(2) 39NA50001503	(2) 39NA50001502	(2) 39NA50001510	(2) 39NA50001501
19	RETAINING ROD	3/8-16 X 38 3/4"	3/8-16 X 43"	3/8-16 X 52 1/4"	3/8-16 X 57 1/2"	3/8-16 X 64"	->
20	HAT CHANNEL	(2) 39NA50001706	(2) 39NA50001705	(2) 39NA50001704	(2) 39NA50001703	(2) 39NA50001702	(2) 39NA50001701
21	SUPPORT PANEL, SCROLL	39NA50001205	39NA50001204	39NA50001203	39NA50001202	39NA50001201	->
22	INLET RING (UNITS W/O IGV)	(2) LA71ZU245	(2) LA71ZU270	(2) LA71ZU330	(2) LA71ZU350	(2) LA71ZU390	(2) ->
FAN SCROLLS For fans with ISO							
30	SCROLL ASSEMBLY	39NA40006406	39NA40006405	39NA40006404	39NA40006403	39NA40006402	39NA40006401
	INCLUDES:						
31	SIDE PLATE, RIGHT	39NA50001009	39NA50001007	39NA50001005	39NA50001003	39NA50001001	X
32	SIDE PLATE, LEFT	39NA50001009	39NA50001007	39NA50001005	39NA50001003	39NA50001002	X
33	SIDE PLATE, REAR	X	X	X	X	X	(2) 39NA50000501
34	SIDE PLATE, FRONT	X	X	X	X	X	(2) 39NA50000601
35	SCROLL, ONE PIECE	39NA50001306	39NA50001305	X	X	X	X
36	SCROLL, 2 PC. TOP	X	X	39NA50001304	39NA50001303	39NA50001302	39NA50001301
37	SCROLL, 2 PC. BOTTOM	X	X	39NA50001404	39NA50001403	39NA50001402	39NA50001401
38	CUTOFF PLATE, SCROLL	(2) 39NA50001505	(2) 39NA50001504	(2) 39NA50001503	(2) 39NA50001502	(2) 39NA50001510	(2) 39NA50001501
39	RETAINING ROD	3/8-16 X 38 3/4"	3/8-16 X 43"	3/8-16 X 52 1/4"	3/8-16 X 57 1/2"	3/8-16 X 64"	->
40	HAT CHANNEL	(2) 39NA50001706	(2) 39NA50001705	(2) 39NA50001704	(2) 39NA50001703	(2) 39NA50001702	(2) 39NA50001701
41	SUPPORT PANEL, SCROLL	39NA50001205	39NA50001204	39NA50001203	39NA50001202	39NA50001201	->
42	INLET RING, (FANS W/O IGV)	(2) LA71ZU245	(2) LA71ZU270	(2) LA71ZU330	(2) LA71ZU350	(2) LA71ZU390	(2) ->

ILLUSTRATIONS ON PAGES 15 & 16



AIR FOIL FAN PARTS FOR 32-92 SIZE UNITS

39NX

SIZE: 07-92

SERIES: 0

ITEM	PART DESCRIPTION	32	39	49	61	74	92
		UNIT SIZE	UNIT SIZE	UNIT SIZE	UNIT SIZE	UNIT SIZE	UNIT SIZE
BEARING SUPPORT FRAME							
50	CHANNEL, BEARING SUPPORT	(2) 39NA50000706	(2) 39NA50000705	(2) 39NA50000704	(2) 39NA50000703	(2) 39NA50000702	(2) 39NA50000701
51	CHANNEL, A-FRAME RIGHT	39NA50000811	39NA50000809	39NA50000807	39NA50000805	39NA50000803	39NA50000801
52	CHANNEL, A-FRAME LEFT	39NA50000812	39NA50000810	39NA50000808	39NA50000806	39NA50000804	39NA50000802
53A	CHNL., BASE (horiz/upblast units)	(2) 39NA50000906	(2) 39NA50000905	(2) 39NA50000904	(2) 39NA50000903	(2) 39NA50000902	(2) 39NA50000901
53B	CHNL., BASE (downblast units)	(2) 39NA50000911	(2) 39NA50000913	(2) 39NA50000915	(2) 39NA50000917	(2) 39NA50000916	(2) 39NA50000901
54	SPACER PLATE	(6) 39NA50006903	(6) ->	(6) ->	(6) ->	(6) 39NA50006901	(6) ->
INLET GUIDE VANE ASSYS							
60	CW INLET GUIDE VANES	LA73ZV245	LA73ZV271	LA73ZV331	LA73ZV355	LA73ZV390	->
61	CCW INLET GUIDE VANES	LA73ZX245	LA73ZX271	LA73ZX331	LA73ZX355	LA73ZX390	->
62	BALL JOINT	(4) HF91BZ002	(4) ->	(4) ->	(4) ->	(4) ->	(4) ->
63	ROD, LINKAGE	(2) 1/2-13 X 28 1/2"	(2) 1/2-13 X 31"	(2) 1/2-13 X 35"	1/2-13 X 38 1/2"	(2) 1/2-13 X 46"	->
64	CRANK ARM	(3) 39NA50030302	(3) ->	(3) ->	(3) ->	(3) ->	(3) ->
65	SHAFT, (BETWEEN ASSYS.)	3/4 DIA X 51 1/4"	3/4 DIA X 57"	3/4 DIA X 61"	3/4 DIA X 67"	3/4 DIA X 73"	->
66	COLLAR	(2) KT51DC106	(2) ->	(2) ->	(2) ->	(2) ->	(2) ->
67	BEARING	(2) KT63QZ060	(2) ->	(2) ->	(2) ->	(2) ->	(2) ->
DUCT ASSEMBLY							
70	ZEE DUCT, TOP/BOTTOM	(2) 39NA50002902	(2) 39NA50002904	(2) 39NA50002906	(2) 39NA50002908	(2) 39NA50002901	(2) ->
71	DUCT CHANNEL, TOP/BOTTOM	(2) 39NA50002702	(2) 39NA50002704	(2) 39NA50002706	(2) 39NA50002708	(2) 39NA50002701	(2) ->
72	ZEE DUCT, SIDES	(2) 39NA50003003	(2) 39NA50003005	(2) 39NA50003007	(2) 39NA50003009	(2) 39NA50003002	(2) 39NA50003001
73	DUCT CHANNEL, SIDES	(2) 39NA50002803	(2) 39NA50002805	(2) 39NA50002807	(2) 39NA50002809	(2) 39NA50002802	(2) 39NA50002801

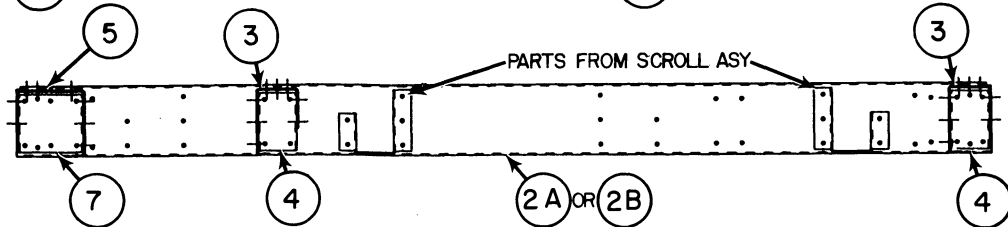
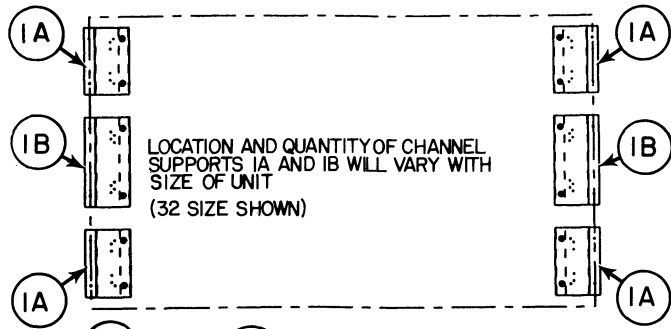
ILLUSTRATIONS ON PAGES 15 & 16

**AIR FOIL
FAN PARTS
FOR 32-92 SIZE UNITS**

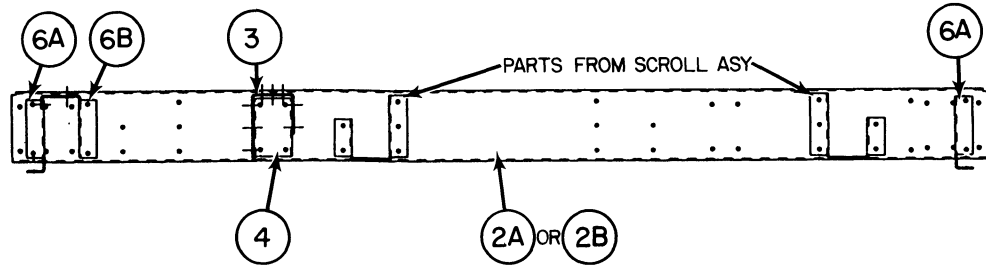
39NX

SIZE: 07-92

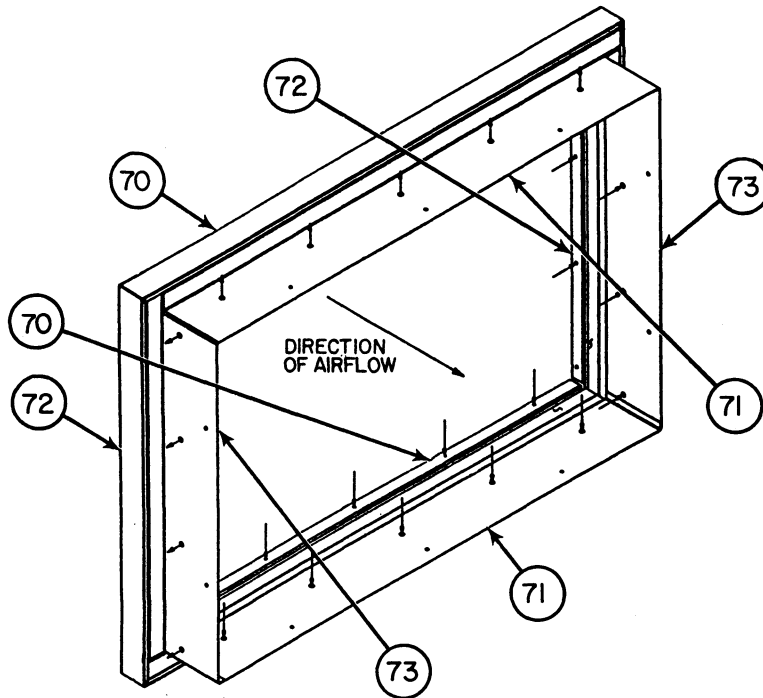
SERIES: 0

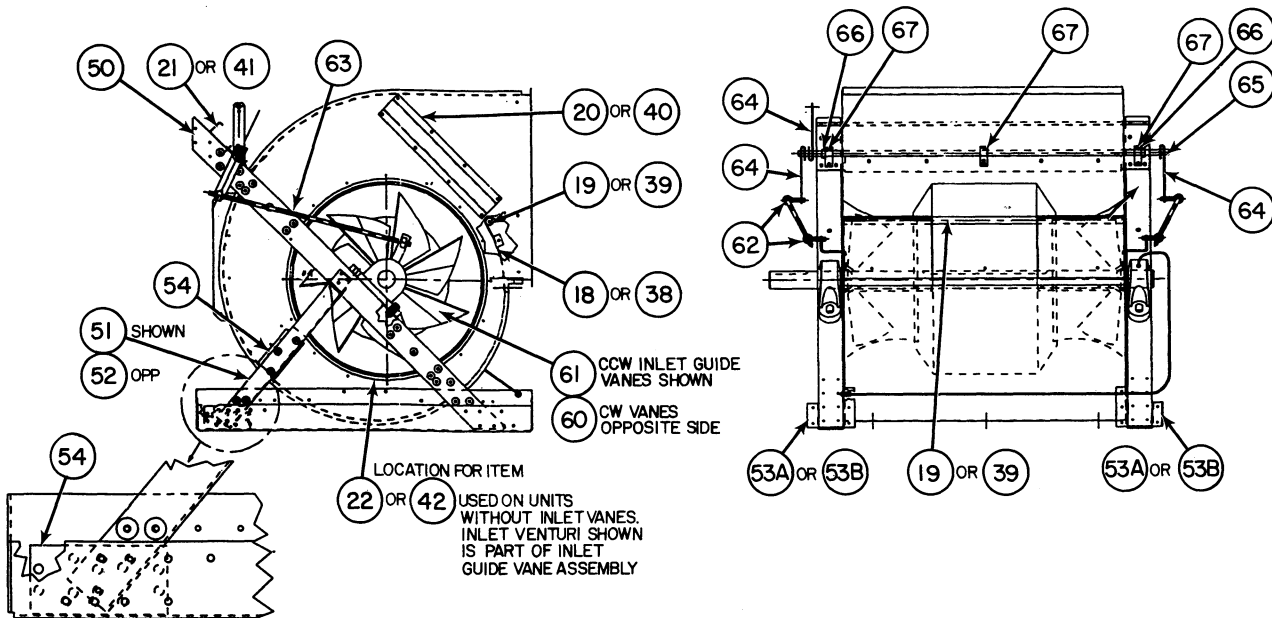
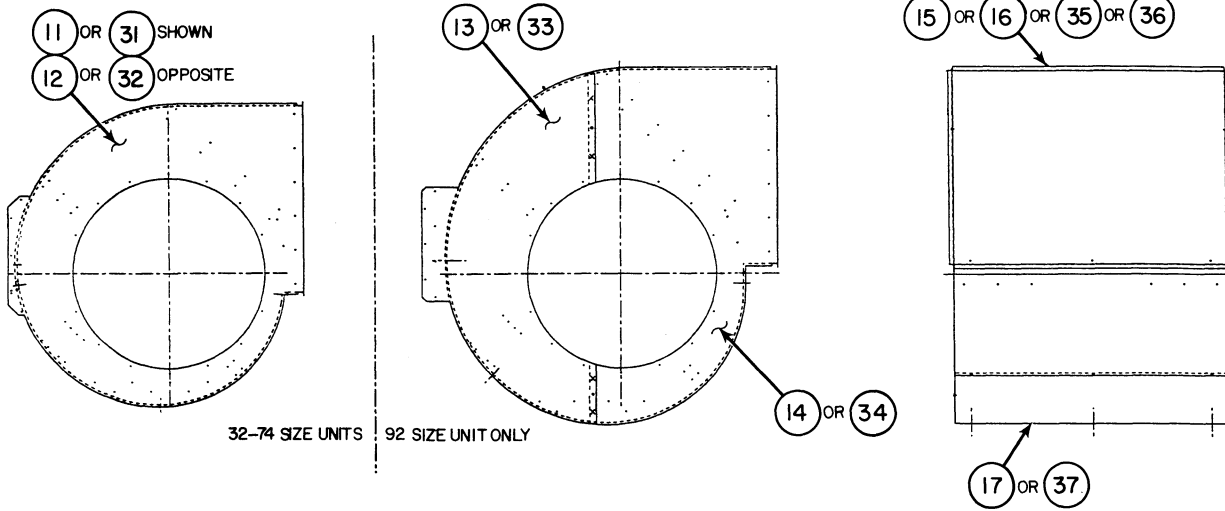


32-92 SIZE AIR FOIL UNITS
BASE FRAME ASSEMBLY
FOR UNITS WITH ISOLATOR
SPRINGS



32-92 SIZE AIR FOIL UNITS
BASE FRAME ASSEMBLY
FOR UNITS WITHOUT
ISOLATOR SPRINGS







FORWARD CURVE FAN PARTS FOR 07-13 SIZE UNITS

39NX

SIZE: 07-92

SERIES: 0

ITEM	PART DESCRIPTION	07		09		11		13	
			SIZE UNIT		SIZE UNIT		SIZE UNIT		SIZE UNIT
BASE FRAME ASSEMBLY									
1A	SUPPORT CHANNEL, UNITS W/ ISO *	(4)	39NA50002303	(4)	->	(4)	->	(4)	->
1B	SUPPORT CHANNEL, UNITS W/O ISO *	(4)	39NA50002304	(4)	->	(4)	->	(4)	->
2	BASE CHANNEL	(2)	39NA50002525	(2)	39NA50002524	(2)	39NA50002523	(2)	39NA50002522
3	MOTOR CHANNEL, NARROW		39NA50002424		39NA50002423		->		39NA50002422
3A	MOTOR CHANNEL, WIDE		X		X		X		39NA50002421
4	MOTOR CHANNEL, FANS W/O ISO		39NA50030912		39NA50030911		->		39NA50030910
<p>* ISO = ISOLATOR SPRINGS</p> <p>To determine if your unit has isolator springs refer to the fan component number on the unit's ID plate.</p> <p>A number "1" in the 7th position indicates no isolator springs. A number "2" indicates unit has isolator springs.</p>									
FAN SCROLL ASSEMBLIES									
FAN SCROLLS									
FANS W/ ISOLATOR SPRINGS									
10A	SIDE PLATE RIGHT		39NA50001048		39NA50001054		->		39NA50001063
10B	SIDE PLATE LEFT		39NA50001049		39NA50001055		->		39NA50001064
10C	SCROLL WRAPPER		39NA50001347		39NA50001343		39NA50001339		39NA50001335
FANS W/O ISOLATOR SPRINGS									
10D	SIDE PLATES	(2)	39NA50001050	(2)	39NA50001056	(2)	->	(2)	39NA50001065
10E	SCROLL WRAPPER		39NA50001348		39NA50001344		39NA50001340		39NA50001336
11	CUTOFF PLATE		39NA50001512		39NA50001514		39NA50001516		39NA50001518
12	ANGLE, SCROLL	(2)	39NA50011105	(2)	39NA50011106	(2)	->	(2)	39NA50011107
13	SUPPORT PANEL		39NA50001214		39NA50001215		39NA50001216		39NA50001217
14	FAN ANGLE		X		X		X		X
15A	DISCHARGE PLATE, FANS W/ ISO		X		X		X		39NA50012612
15B	DISCHARGE PLATE, FANS W/O ISO		X		X		X		39NA50012616
16	INLET RING	(2)	39LC500103	(2)	39LC500156	(2)	->	(2)	39LC500169
BEARING SUPPORT FRAME									
20	BEARING SUPPORT CHANNEL	(2)	39NA50000713	(2)	39NA50000715	(2)	->	(2)	39NA50000717
21	CHANNEL, A-FRAME, RIGHT		39NA50000823		39NA50000827		->		39NA50000831
22	CHANNEL, A-FRAME, LEFT		39NA50000824		39NA50000828		->		39NA50000832
23	CHANNEL, A-FRAME BASE	(2)	39NA50000920	(2)	39NA50000922	(2)	->	(2)	39NA50000924
24	SPACER PLATE	(4)	39NA50006902	(4)	->	(4)	->	(4)	->
INLET GUIDE VANE ASSEMBLIES									
30	CW VANES		39EA20G823		39LC400070		->		39EA30G823
31	CCW VANES		39EA20G813		39LC400069		->		39EA30G813
32	INLET RING	(2)	39LC500103	(2)	39LC500156	(2)	->	(2)	39LC500169
33	BALL JOINT	(4)	HF91BB125	(4)	->	(4)	->	(4)	->
34	BEARING	(2)	KT50BV050	(2)	->	(2)	->	(2)	->
35	COLLAR	(2)	KT51DC001	(2)	->	(2)	->	(2)	->
36	SHAFT (BETWEEN ASSYS.)		1/2 DIA X 30 3/8"		1/2 DIA X 32 3/8"		1/2 DIA X 35 1/2"		1/2 DIA X 37 1/2"
37	CRANK ARM	(2)	39NA50030304	(2)	->	(2)	->	(2)	->
38	CRANK ARM		39NA50030306		->		->		->
39	ROD, LINKAGE	(2)	5/16 DIA X 15"	(2)	->	(2)	->	(2)	->
40	DAMPER ANGLE	(2)	39NA50074601	(2)	->	(2)	->	(2)	39NA50074602
DUCT ASSEMBLY									
50	ZEE DUCT, TOP/BOTTOM	(2)	39NA50002911	(2)	39NA50002913	(2)	39NA50002915	(2)	39NA50002917
51	DUCT CHANNEL, TOP/BOTTOM	(2)	39NA50002712	(2)	39NA50002714	(2)	39NA50002716	(2)	39NA50002718
52	ZEE DUCT, SIDES	(2)	39NA50003012	(2)	39NA50003014	(2)	39NA50003016	(2)	39NA50003018
53	DUCT CHANNEL, SIDES	(2)	39NA50002812	(2)	39NA50002814	(2)	39NA50002816	(2)	39NA50002818

ILLUSTRATIONS ON PAGES 19 & 20



FORWARD CURVE FAN PARTS FOR 17-26 SIZE UNITS

39NX

SIZE: 07-92

SERIES: 0

ITEM	PART DESCRIPTION	17		21		26	
			SIZE UNIT		SIZE UNIT		SIZE UNIT
BASE FRAME ASSEMBLY							
1A	SUPPORT CHANNEL, UNITS W/ ISO *	(4)	39NA50002303		X		X
1B	SUPPORT CHANNEL, UNITS W/O ISO *	(4)	39NA50002304	(4)	->	(4)	->
2	BASE CHANNEL	(2)	39NA50002521	(2)	39NA50002520	(2)	39NA50002519
3	MOTOR CHANNEL, NARROW		39NA50002420		X		X
3A	MOTOR CHANNEL, WIDE		39NA50002419		39NA50002418		39NA50002417
4	MOTOR CHANNEL, FANS W/O ISO		39NA50030909		39NA50030908		39NA50030904
* ISO = ISOLATOR SPRINGS							
To determine if your unit has isolator springs refer to the fan component number on the unit's ID plate.							
A number "1" in the 7th position indicates no isolator springs. A number "2" indicates unit has isolator springs.							
FAN SCROLL ASSEMBLIES							
FAN SCROLLS							
FANS W/ ISOLATOR SPRINGS							
10A	SIDE PLATE RIGHT		39NA50001069		39NA50001075		39NA50001081
10B	SIDE PLATE LEFT		39NA50001070		39NA50001076		39NA50001082
10C	SCROLL WRAPPER		39NA50001331		39NA50001327		39NA50001323
FANS W/O ISOLATOR SPRINGS							
10D	SIDE PLATES	(2)	39NA50001071	(2)	39NA50001077	(2)	39NA50001083
10E	SCROLL WRAPPER		39NA50001332		39NA50001328		39NA50001324
11	CUTOFF PLATE		39NA50001520		39NA50001522		39NA50001524
12	ANGLE, SCROLL	(2)	39NA50011108	(2)	39NA50011109	(2)	39NA50011110
13	SUPPORT PANEL		39NA50001218		39NA50001219		39NA50001220
14	FAN ANGLE		X	(2)	39NA50065801	(2)	->
15A	DISCHARGE PLATE, FANS W/ ISO		39NA50012611		39NA50012610		39NA50012609
15B	DISCHARGE PLATE, FANS W/O ISO		39NA50012615		39NA50012614		39NA50012613
16	INLET RING	(2)	39LC500105	(2)	39NA50014202	(2)	39LC500398
BEARING SUPPORT FRAME							
20	BEARING SUPPORT CHANNEL	(2)	39NA50000719	(2)	39NA50000721	(2)	39NA50000723
21	CHANNEL, A-FRAME, RIGHT		39NA50000835		39NA50000837		39NA50000839
22	CHANNEL, A-FRAME, LEFT		39NA50000836		39NA50000838		39NA50000840
23	CHANNEL, A-FRAME BASE	(2)	39NA50000926	(2)	39NA50000928	(2)	39NA50000930
24	SPACER PLATE	(4)	39NA50006902	(4)	->	(4)	->
INLET GUIDE VANE ASSEMBLIES							
30	CW VANES		39EA40G823		39EA45G823		39EA50G823
31	CCW VANES		39EA40G813		39EA45G813		39EA50G813
32	INLET RING	(2)	39LC500105	(2)	39NA50014202	(2)	39LC500398
33	BALL JOINT	(4)	HF91BB125	(4)	->	(4)	->
34	BEARING	(2)	KT50BV050	(2)	->	(2)	->
35	COLLAR	(2)	KT51DC001	(2)	->	(2)	->
36	SHAFT (BETWEEN ASSYS.)		1/2 DIA X 40"		1/2 DIA X 44"		1/2 DIA X 47"
37	CRANK ARM	(2)	39NA50030303	(2)	->	(2)	->
38	CRANK ARM		39NA50030307		->		->
39	ROD, LINKAGE	(2)	5/16 DIA X 22 1/2"	(2)	->	(2)	->
40	DAMPER ANGLE	(2)	39NA50074602	(2)	->	(2)	->
DUCT ASSEMBLY							
50	ZEE DUCT, TOP/BOTTOM	(2)	39NA50002919	(2)	39NA50002921	(2)	39NA50002923
51	DUCT CHANNEL, TOP/BOTTOM	(2)	39NA50002720	(2)	39NA50002722	(2)	39NA50002724
52	ZEE DUCT, SIDES	(2)	39NA50003020	(2)	39NA50003022	(2)	39NA50003024
53	DUCT CHANNEL, SIDES	(2)	39NA50002820	(2)	39NA50002822	(2)	39NA50002824

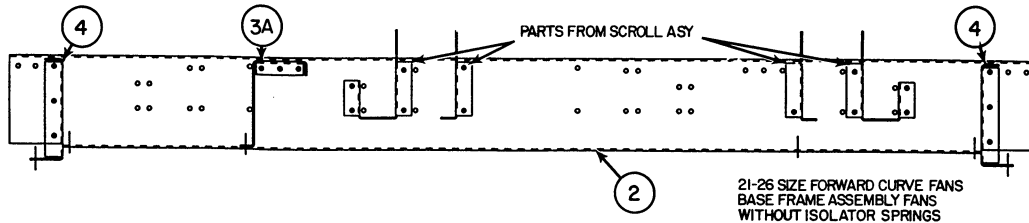
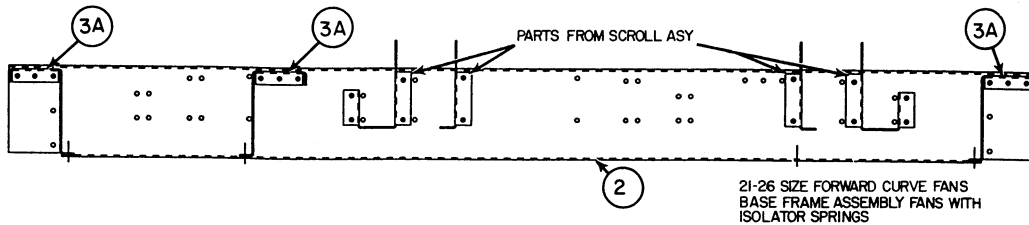
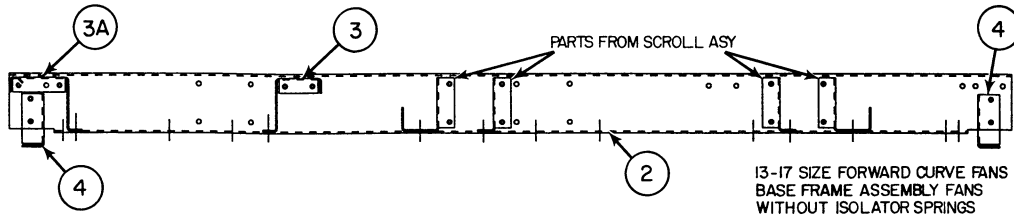
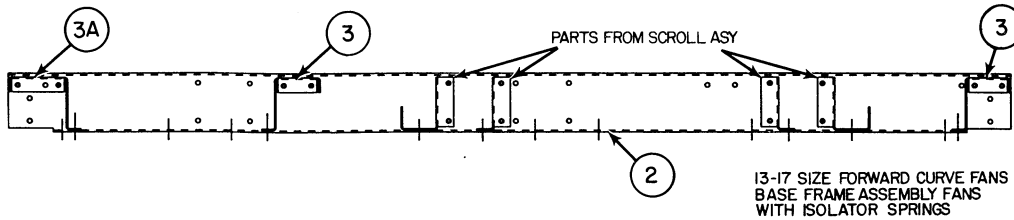
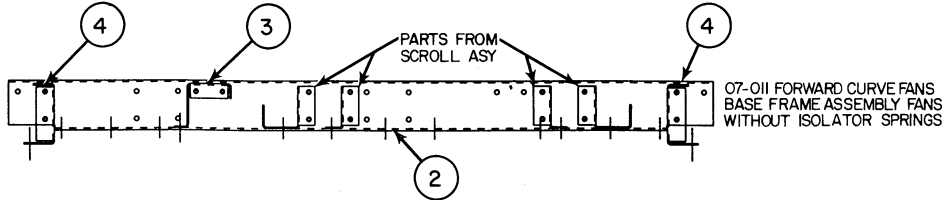
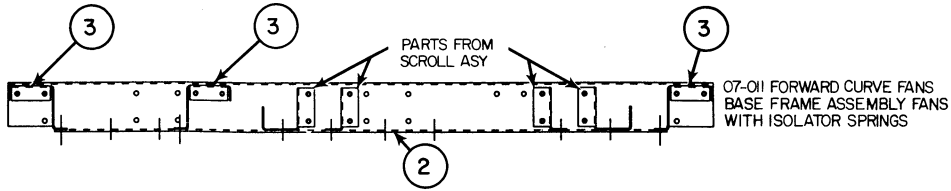
ILLUSTRATIONS ON PAGES 19 & 20

**FORWARD CURVE
FAN PARTS
FOR 07-26 SIZE UNITS**

39NX

SIZE: 07-92

SERIES: 0

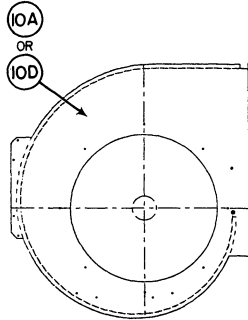


**FORWARD CURVE
FAN PARTS
FOR 07-26 SIZE UNITS**

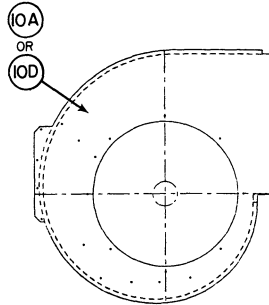
39NX

SIZE: 07-92

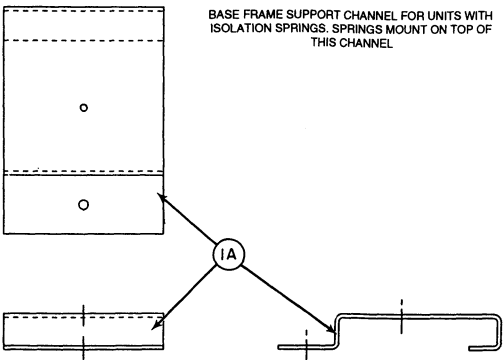
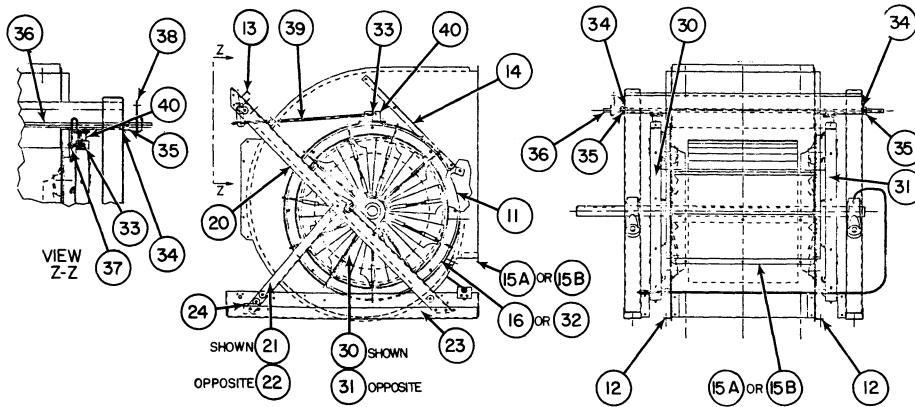
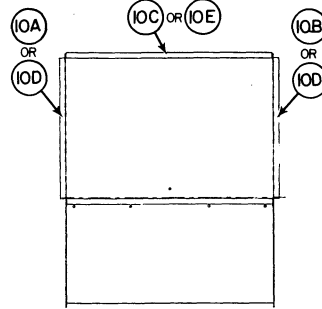
SERIES: 0



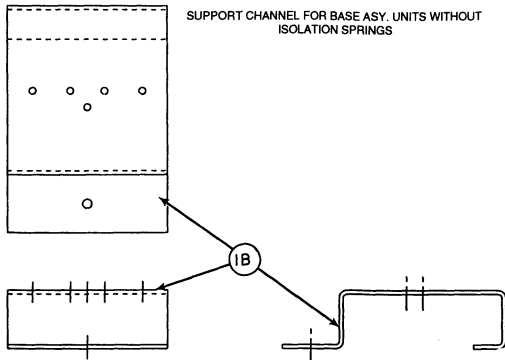
13-26 SIZE FORWARD CURVE



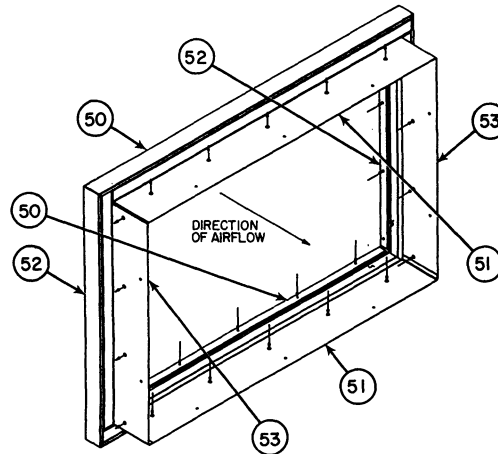
07-11 SIZE FORWARD CURVE



BASE FRAME SUPPORT CHANNEL FOR UNITS WITH ISOLATION SPRINGS. SPRINGS MOUNT ON TOP OF THIS CHANNEL



SUPPORT CHANNEL FOR BASE ASY. UNITS WITHOUT ISOLATION SPRINGS





FORWARD CURVE FAN PARTS FOR 32-92 SIZE UNITS

39NX

SIZE: 07-92

SERIES: 0

ITEM	PART DESCRIPTION	32		39		49		61	
		UNIT SIZE		UNIT SIZE		UNIT SIZE		UNIT SIZE	
BASE FRAME ASSEMBLY									
1A	CHANNEL SUPPORT 300MM	(4)	39NA50002302	(2)	->	(2)	->	(4)	->
1B	CHANNEL SUPPORT 400MM	(2)	39NA50002301	(4)	->	(4)	->	(4)	->
2A	BASE CHANNEL, (horiz/upblast units)	(2)	39NA50002505	(2)	39NA50002510	(2)	39NA50002528	(2)	39NA50002502
2B	BASE CHANNEL, (downblast units)		39NA50002518	(2)	39NA50002517	(2)	39NA50002529	(2)	39NA50002515
3	MOTOR CHANNEL		39NA50002404		39NA50002410		39NA50002408		39NA50002403
4	RAIL BRACKET		39NA50002203		->		39NA50002204		->
5	MOTOR CHANNEL, FANS W/ISO & IGV*		39NA50002405		39NA50002409		X		X
6	MOTOR CHNL, FANS WO/ISO		39NA50003091		39NA50003092		39NA500030903		39NA500030905
7	MOTOR CHNL, FANS WO/ISO, W/IGV		39NA50002416		39NA50002415		X		X
8	RAIL BRACKET, FANS W/ISO & IGV		39NA50002202		->		X		X
FAN SCROLLS. For fans without Isolator Springs and for downblast units									
10	SCROLL ASSEMBLY		39NA40006420		39NA40006419		39NA40006418		39NA40006417
	INCLUDES:								
11	SIDE PLATES	(2)	39NA50001042	(2)	39NA50001040	(2)	39NA50001038	(2)	39NA50001036
12	SCROLL WRAPPER, ONE PIECE		39NA50001317		39NA50001318		X		X
13	SCROLL WRAPPER, 2 PC TOP		X		X		39NA50001319		39NA50001320
14	SCROLL WRAPPER, 2 PC BOTTOM		X		X		39NA50001409		39NA50001410
15	CUTOFF, SCROLL		39NA50001506		39NA50001507		39NA50001508		39NA50001509
16	HAT CHANNEL (horiz. & upblast only)	(2)	39NA50001707	(2)	39NA50001705	(2)	39NA50001704	(2)	39NA50001703
17A	SUPPORT PANEL, FANS W/IGV	(2)	39NA50001207	(2)	39NA50001209	(2)	39NA50001211	(2)	39NA50001213
17B	SUPPORT PANEL, FANS W/O IGV	(2)	39NA50001206	(2)	39NA50001208	(2)	39NA50001210	(2)	39NA50001212
18	INLET RING	(2)	39LC500398	(2)	39LC500400	(2)	39NA50014201	(2)	39EA702702
19	DISCHARGE PLATE, SCROLL		39NA50012608		39NA50012607		39NA50012606		39NA50012605
20	SCROLL ANGLE, FANS W/IGV ONLY	(2)	39NA50011101	(2)	39NA50011102		39NA50011103		39NA50011104
FAN SCROLLS. For fans with Isolator Springs									
30	SCROLL ASSEMBLY		39NA40006416		39NA40006415		39NA40006414		39NA40006413
	INCLUDES:								
31	SIDE PLATE, RIGHT		39NA50001011		39NA50001013		39NA50001015		39NA50001017
32	SIDE PLATE, LEFT		39NA50001011		39NA50001013		39NA50001015		39NA50001018
33	SCROLL WRAPPER, ONE PIECE		39NA50001307		39NA50001308		X		X
34	SCROLL WRAPPER, 2 PC TOP		X		X		39NA50001309		39NA50001310
35	SCROLL WRAPPER, 2 PC BOTTOM		X		X		39NA50001409		39NA50001410
36	CUTOFF, SCROLL		39NA50001506		39NA50001507		39NA50001508		39NA50001509
37	HAT CHANNEL (horiz. & upblast only)	(2)	39NA50001707	(2)	39NA50001705	(2)	39NA50001704	(2)	39NA50001703
38	INLET RING	(2)	39LC500398	(2)	39LC500400	(2)	39NA50014201	(2)	39EA702702
39A	SUPPORT PANEL, FANS W/IGV	(2)	39NA50001207	(2)	39NA50001209	(2)	39NA50001211	(2)	39NA50001213
39B	SUPPORT PANEL, FANS W/O IGV	(2)	39NA50001206	(2)	39NA50001208	(2)	39NA50001210	(2)	39NA50001212
40	DISCHARGE PLATE, SCROLL		39NA50012601		39NA500012602		39NA50012603		39NA50012604
41	SCROLL ANGLE, FANS W/IGV ONLY	(2)	39NA50011101	(2)	39NA50011102	(2)	39NA50011103	(2)	39NA50011104

ILLUSTRATIONS ON PAGES 23 & 24

* POSITION 1 2 3 4 5 6 7 8 9 10 11 12 13 14 15 16
 EXAMPLE FAN COMPONENT (from page 2) 3 9 N A 7 4 2 2 A F S 5 1 5 N L

ISO = ISOLATOR SPRINGS: To determine if your unit has isolator springs refer to the **Fan Component** number on the unit's ID plate (see example above). A number "1" in the 7th position indicates **no** ISO. A number "2" indicates unit **has** ISO.

IGV = INLET GUIDE VANES: To determine if your unit has inlet guide vanes refer to the **Fan Component** number on the unit's ID plate. A number "1" in the 8th position indicates **no** IGV. A number "2" indicates unit **has** IGV.

The example Fan Component above would have both ISOLATOR SPRINGS and INLET GUIDE VANES.



FORWARD CURVE FAN PARTS FOR 32-92 SIZE UNITS

39NX

SIZE: 07-92

SERIES: 0

ITEM	PART DESCRIPTION	32		39		49		61	
			UNIT SIZE		UNIT SIZE		UNIT SIZE		UNIT SIZE
BEARING SUPPORT FRAME									
50	CHANNEL, BEARING SUPPORT	(2)	39NA50000707	(2)	39NA50000708	(2)	39NA50000709	(2)	39NA50000710
51	CHANNEL, A-FRAME, RIGHT		39NA50000813		39NA50000815		39NA50000817		39NA50000819
52	CHANNEL, A-FRAME, LEFT		39NA50000814		39NA50000816		39NA50000818		39NA50000820
53A	CHNL A-FRAME, BASE (horiz/upblast)	(2)	39NA50000907	(2)	39NA50000908	(2)	39NA50000909	(2)	39NA50000910
53B	CHNL A-FRAME, BASE (downblast units)	(2)	39NZ50000912	(2)	39NA50000914	(2)	39NA50000909	(2)	39NA50000918
54	SPACER PLATE		39NA50006903		->		->		->
INLET GUIDE VANE ASSEMBLIES									
60	CW VANE ASSEMBLY		39EA50G823		39EA55G823		39EA65G823		39EA70G823
61	CCW VANE ASSEMBLY		39EA50G813		39EA55G813		39EA65G813		39EA70G813
62	BALL JOINT	(4)	HF91BB125	(4)	->	(4)	->	(4)	->
63	ROD, LINKAGE	(2)	5/16 X 21"	(2)	5/16 X 22 1/2"	(2)	5/16 X 24"	(2)	5/16 X 28"
64	CRANK ARM	(3)	39NA50030301	(3)	->	(3)	->	(3)	->
65	SHAFT (BETWEEN ASSYS.)		3/4 DIA X 51 1/4"		3/4 DIA X 57"		3/4 DIA X 61"		3/4 DIA X 67"
66	COLLAR	(2)	KT51DC106	(2)	->	(2)	->	(2)	->
67	BEARING	(2)	KT63QZ060	(2)	->	(2)	->	(2)	->
68	INLET RING	(2)	39LC500398	(2)	39LC500400	(2)	39NA50014201	(2)	->
69	DAMPER ANGLE	(2)	39NA50074603	(2)	->	(2)	->	(2)	->
70	CHANNEL SUPPORT, SIDEPLATE		X		X		X	(2)	39NA50075801
DUCT ASSEMBLY									
80	ZEE DUCT, TOP/BOTTOM	(2)	39NA50002903	(2)	39NA50002905	(2)	39NA50002907	(2)	39NA50002909
81	DUCT CHANNEL, TOP/BOTTOM	(2)	39NA50002703	(2)	39NA50002705	(2)	39NA50002707	(2)	39NA50002709
82	ZEE DUCT, SIDES	(2)	39NA50003004	(2)	39NA50003006	(2)	39NA50003008	(2)	39NA50003010
83	DUCT CHANNEL, SIDES	(2)	39NA50002804	(2)	39NA50002806	(2)	39NA50002808	(2)	39NA50002810

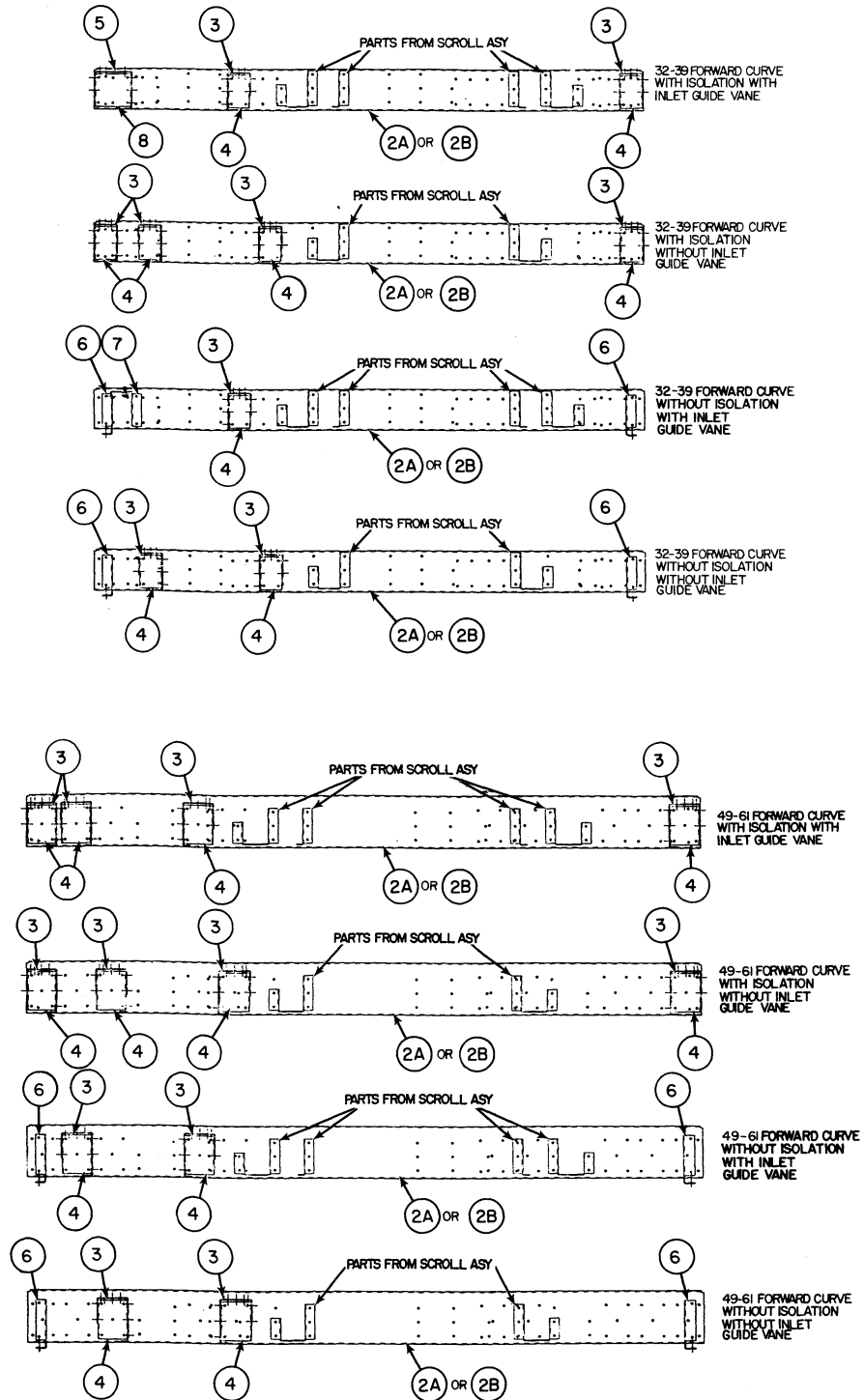
ILLUSTRATIONS ON PAGES 23 & 24

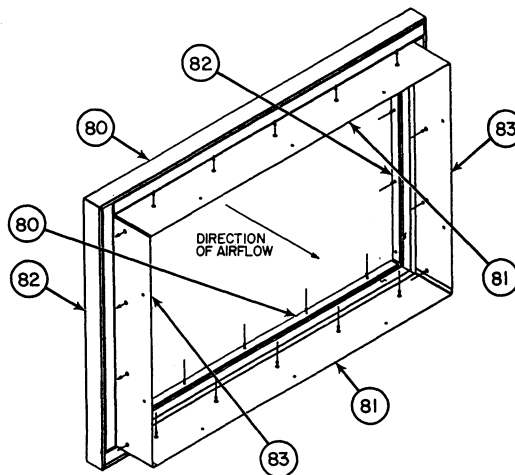
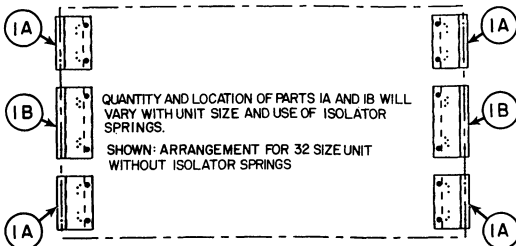
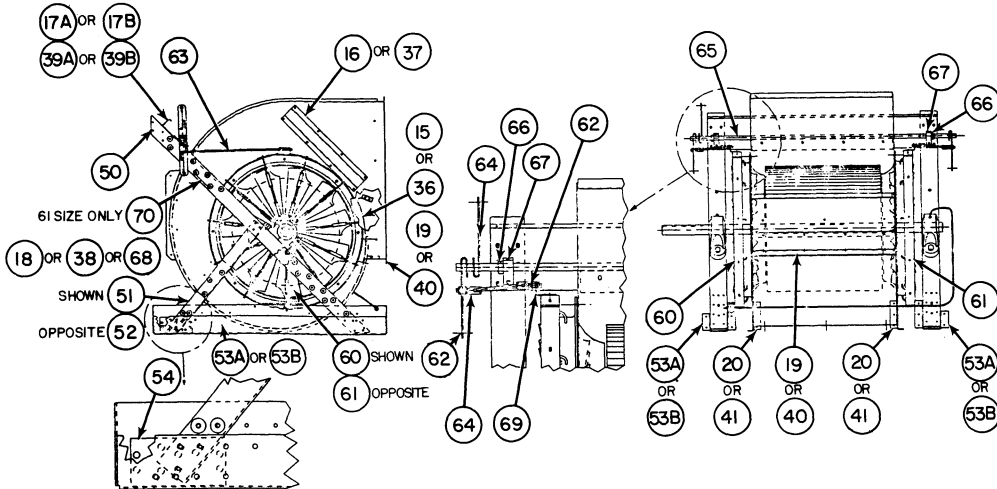
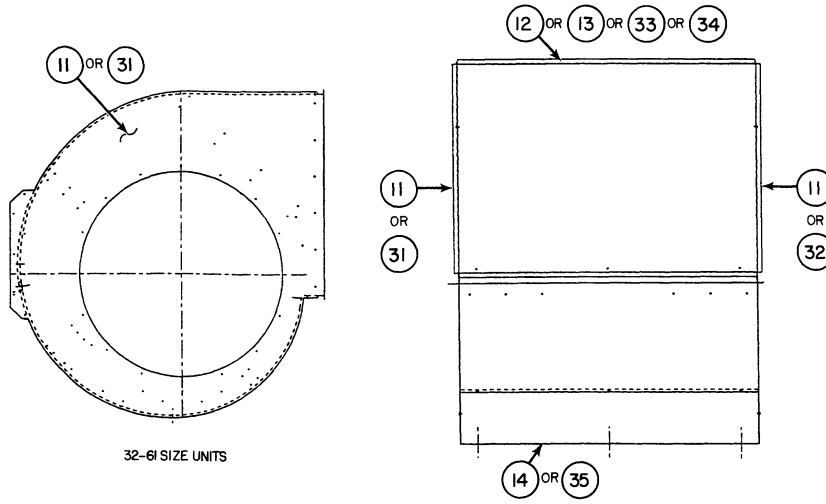
**FORWARD CURVE
FAN PARTS
FOR 32-92 SIZE UNITS**

39NX

SIZE: 07-92

SERIES: 0







MOTOR MOUNTING PLATES

FOR AIR FOIL & FORWARD CURVE FANS

STANDARD & AUXILIARY

39NX

SIZE: 07-92

SERIES: 0

ITEM	PART DESCRIPTION	07	09	11
		UNIT SIZE	UNIT SIZE	UNIT SIZE
	STANDARD MOTOR PLATE			
	MOTOR PLATE ASSEMBLY	39NA40006213	39NA40006214	39NA40006215
	INCLUDES:			
1	PLATE, MOTOR MOUNTING	39NA50003126	39NA50003125	39NA50003124
5	CHANNEL, MOTOR ADJUST	39NA50003206	->	39NA50003207
7	THREADED ROD	(2) 1/2-13 X 9"	(2) ->	(2) ->

ITEM	PART DESCRIPTION	13	17	21	26
		UNIT SIZE	UNIT SIZE	UNIT SIZE	UNIT SIZE
	STANDARD MOTOR PLATE				
	MOTOR PLATE ASSEMBLY	39NA40006216	39NA40006217	39NA40006218	39NA40006219
	INCLUDES:				
1	PLATE, MOTOR MOUNTING	39NA50003123	->	39NA50003122	39NA50003121
5	CHANNEL, MOTOR ADJUST	39NA50003208	->	39NA50003209	39NA50003210
7	THREADED ROD	(2) 1/2-13 X 9"	(2) ->	(2) 1/2-13 X 10"	(2) ->

ITEM	PART DESCRIPTION	32	39	49	61	74	92
		UNIT SIZE	UNIT SIZE	UNIT SIZE	UNIT SIZE	UNIT SIZE	UNIT SIZE
	STANDARD MOTOR PLATE						
	MOTOR PLATE ASSEMBLY	39NA40006206	39NA40006205	39NA40006204	39NA40006203	39NA40006202	39NA40006201
	INCLUDES:						
1	PLATE, MOTOR MOUNTING	39NA50003105	39NA50003109	39NA50003107	39NA50003103	39NA50003101	->
2	PLATE, MOTOR BACKING	39NA50003106	39NA50003110	39NA50003108	39NA50003104	39NA50003102	->
3	ANGLE, MOTOR ADJUST	39NA50003203	->	39NA50003204	X	X	X
4	CHANNEL, MOTOR ADJUST	X	X	X	39NA50003202	39NA50003201	->
5	CHANNEL, MOTOR ADJUST	X	X	X	X	X	X
6	RETAINER, NUT	(4) 39NA40003401	(4) ->	(4) ->	(4) ->	(4) ->	(4) ->
7	THREADED ROD	(2) 1/2-13 X 11.8"	(2) 1/2-13 X 15.75"	(2) ->	(2) ->	(2) 1/2-13 X 19.7"	(2) 1/2-13 X 27.5"
	AUXILIARY MOTOR PLATE						
	AUX. MOTOR PLATE ASY.	39NA40006212	39NA40006207	39NA40006208	39NA40006209	39NA40006210	39NA40006211
	INCLUDES:						
9	PLATE, MOTOR MOUNTING	39NA50003105	39NA50003109	39NA50003107	39NA50003103	39NA50003101	->
10	PLATE, MOTOR BACKING	39NA50003106	39NA50003110	39NA50003108	39NA50003104	39NA50003102	->
11	RETAINER, NUT	(8) 39NA40003401	(8) ->	(8) ->	(8) ->	(8) ->	(8) ->
12	THREADED ROD	(2) 1/2-13 X 19.7"	(2) ->	(2) 1/2-13 X 23.7"	(4) 1/2-13 X 15.75"	(4) 1/2-13 X 19.7"	(4) 1/2-13 X 27.5"
13	AUX. PLATE, MTR. MOUNT	39NA50003111	39NA50003112	39NA50003113	39NA50003114	39NA50003115	->
14	AUX. PLATE, MTR. BACKING	39NA50003116	39NA50003117	39NA50003118	39NA50003119	39NA50003120	->
15	CHANNEL, MTR. ADJUST	X	X	X	39NA50003202	39NA50003201	->

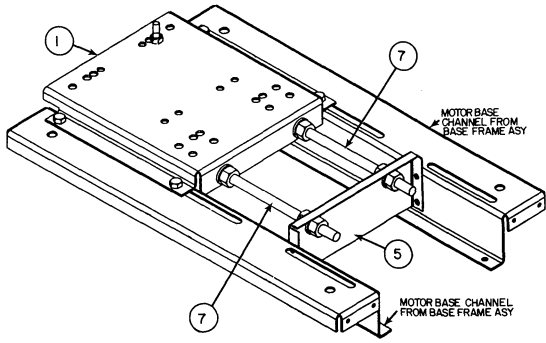
ILLUSTRATIONS FOR THESE MOTOR PLATES ARE ON THE FOLLOWING PAGE.

**MOTOR MOUNTING PLATES
FOR AIR FOIL & FORWARD CURVE FANS
STANDARD & AUXILIARY**

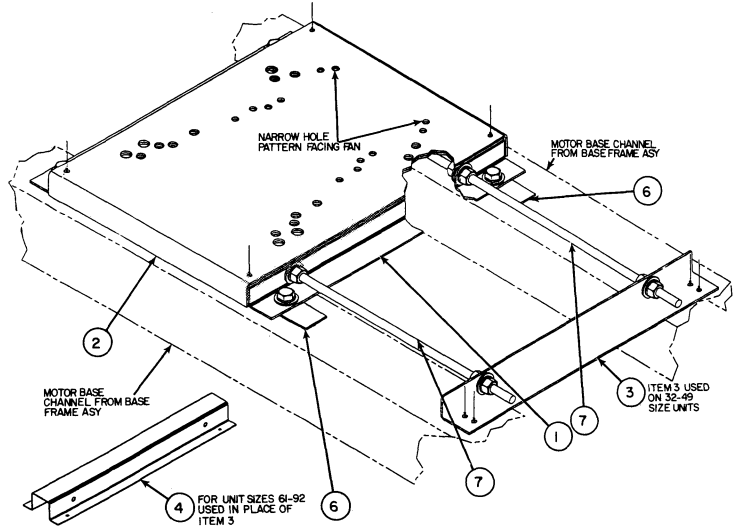
39NX

SIZE: 07-92

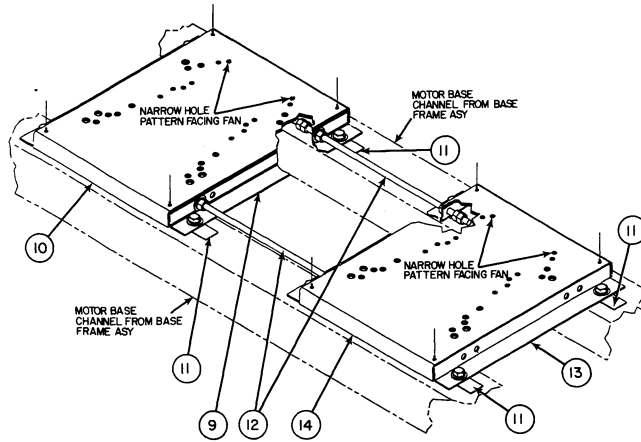
SERIES: 0



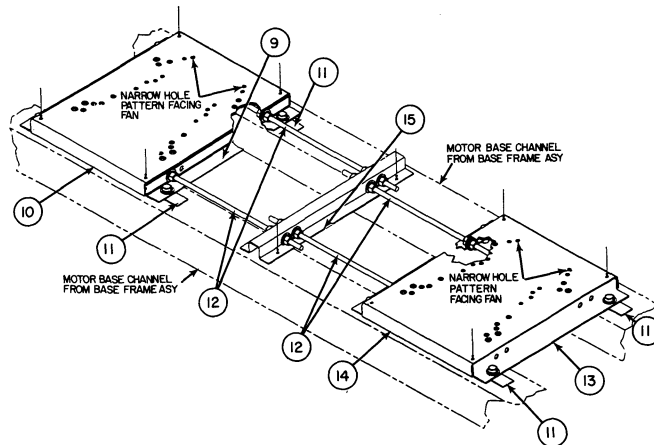
MOTOR PLATE ASY. FOR 07-26 SIZE UNITS



STANDARD MOTOR PLATE FOR 32-92 SIZE UNITS



AUXILIARY MOTOR PLATE FOR 32-49 SIZE UNITS



AUXILIARY MOUNTING PLATE FOR 61-92 SIZE UNITS

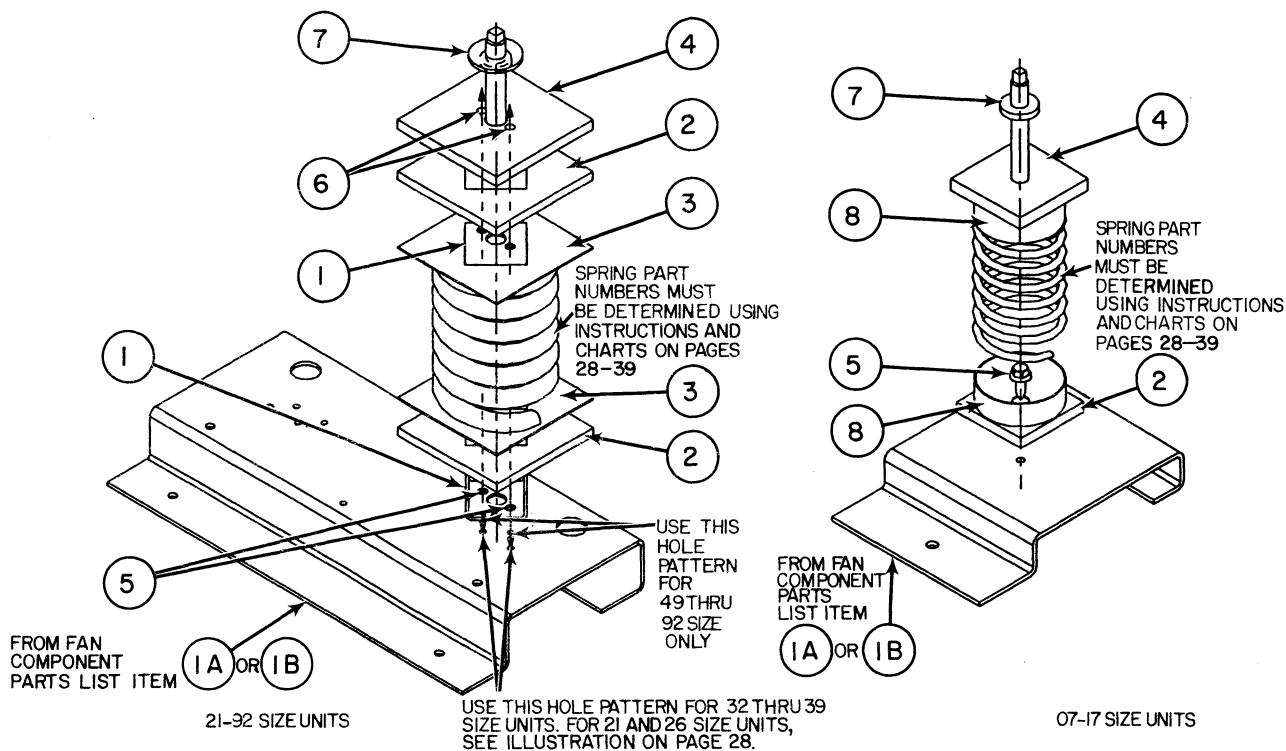
**ISOLATION SPRING
PACKAGES**

39NX

SIZE: 07-92

SERIES: 0

ITEM	PART DESCRIPTION	39NA40006301		39NA40006302		39NA40006303	
		SPRING PKG.		SPRING PKG.		SPRING PKG.	
		used on 49-92		used on 21-39		used on 07-17	
		size units		size units		size units	
1	SPRING BRACKET	(2)	39NA50027601	(2)	39NA50027602		X
2	ISOLATOR (FOAM)	(2)	39NA50027401	(2)	39NA50027402		39NA50027403
3	KEEPER PLATE	(2)	39NA50027501	(2)	39NA50027502		X
4	SUPPORT PLATE		39NA50003401		39NA50003402		39NA50003403
5	SCREW 1/4-14 X 3/4"	(2)	AL 48AM 308	(2)	->		->
6	BOLT	(2)	1/4-20 X 1/2 HEX	(2)	->		X
7	ADJUSTMENT BOLT		39NA50047701		->		39NA50047702
8	CUP, SPRING		X		X	(2)	39NA50065701





SPRING SELECTION INSTRUCTIONS

39NX

SIZE: 07-92

SERIES: 0

To select the correct springs for your unit you need to establish a 6 digit spring selection code from information on the unit's serial / ID plate (fan component & 99M_ motor numbers). The following instructions will help you create the code.

Then apply the code to the appropriate chart on pages 29-39 according to unit size. The chart will give the part numbers of the four springs and the diagram below shows you where each spring is located. All spring part numbers begin with 39NA500143__ and the last two digits are taken from the charts on pages 29-39.

Code position	1	2	3	4	5	6	
Example code	A	O	R	A	1	4	<---Code derived from info. on sample serial / ID plate on page 2.

CODE INSTRUCTIONS

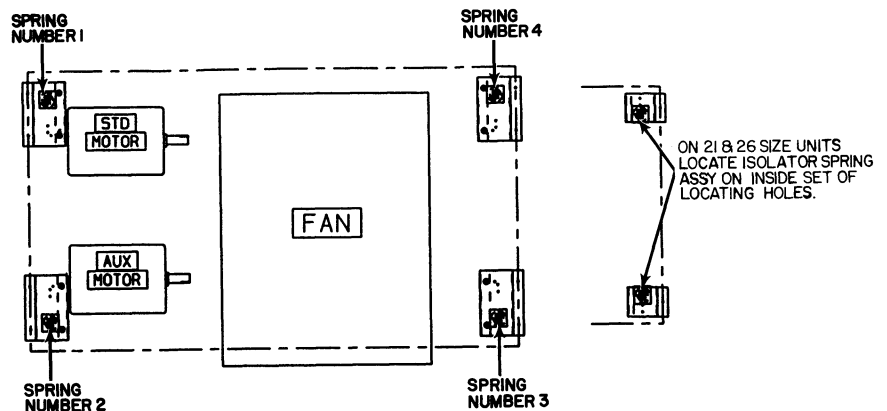
- code position **1** **A** = air foil fans, **F** = forward curve fans
 Use the fan component number & abbreviation index (page 3) to determine air foil or forward curve.
 From page 2 & 3: 3 9 N A 7 4 2 2 **A F S 5** 2 5 N L Air foil fan is indicated. Example position 1 = A.
- code position **2** **O** = No auxiliary motor. **M** = Unit has an auxiliary motor.
 If a unit has an auxiliary motor it will be identified as such on the serial / ID plate. Since the sample serial / ID plate on page 2 does not list an auxiliary motor the unit doesn't have one, so in the example code position 2 = "O".
- code position **3** **R** = standard motor **S** = high efficiency motor **T** = two speed motor
 R, S, or T is taken from the 4th digit in the motor number found on the serial / ID plate (from page 2) 9 9 M **R** 1 4 0..... standard motor indicated. Code position 3 above = R.
- code position **4** **A** = open drip proof motor **C** = totally enclosed motor
 Determined by the 10th position of the "99M...." motor number.
 from page 2: 9 9 M R 1 4 0 5 B **A** 3 5 0 1 A 0. open drip proof motor used. Position 4 above = A.
- code positions **5** & **6** The 2 digit number is a horsepower reference number not the actual horsepower of motor.
 The numbers are taken from the 5th & 6th digits in the "99M...." motor number.
 From page 2 example: 9 9 M R **14** 0 5 B Acode position 5 & 6 = 14

UNIT SIZE: From 5th & 6th digits in component numbers. 3 9 N A **74** A F S 5 ___ example unit size = 74.

Spring part numbers for above example are found in the chart on page 38, 3rd column, to the right of spring code "AORA14".

- spring number 1 = 39NA50014304
- spring number 2 = 39NA50014304
- spring number 3 = 39NA50014303
- spring number 4 = 39NA50014303

Spring locations shown in diagram --->



ISOLATOR SPRING LOCATIONS



ISOLATION SPRINGS SELECTION CHART

39NX

PART NUMBER 39NA500143__

SIZE: 07-92

LAST TWO DIGITS OF PART NUMBER FROM CHART

SERIES: 0

SPRING CODE	SPRING NO.			
	1	2	3	4
07 SIZE UNITS				
FORA03	17	17	17	17
FORA04	18	17	17	17
FORA05	18	17	17	17
FORA06	18	18	17	18
FORA07	19	18	17	18
FORA08	19	18	17	18
FORA09	20	18	17	18
FORC03	18	18	17	18
FORC04	18	18	17	18
FORC05	18	18	17	18
FORC06	19	18	17	18
FORC07	20	19	17	18
FORC08	20	19	17	18
FOSA03	18	17	17	17
FOSA04	18	17	17	17
FOSA05	18	17	17	17
FOSA06	18	18	17	18
FOSA07	19	18	17	18
FOSA08	19	18	17	18
FOSA09	19	18	17	18
FOSC03	18	17	17	17
FOSC04	18	17	17	17
FOSC05	18	17	17	17
FOSC06	19	18	17	18
FOSC07	19	18	17	19
FOSC08	20	19	17	18
FOSC09	20	19	17	18
FOTA03	18	17	17	17
FOTA04	18	17	17	17
FOTA05	18	17	17	17
FOTA06	19	18	17	18
FOTA07	20	18	17	18
FOTA08	20	18	17	18
FOTA09	21	19	17	19
FOTC03	18	17	17	17
FOTC04	18	17	17	17
FOTC05	18	18	17	18
FOTC06	19	18	17	18
FOTC07	20	18	17	18
FOTC08	20	18	17	18
FOTC09	21	19	17	19

SPRING CODE	SPRING NO.			
	1	2	3	4
AORA03	17	17	17	17
AORA04	17	17	17	17
AORA05	17	17	17	17
AORA06	18	17	17	17
AORA07	18	18	17	18
AORA08	19	18	17	18
AORA09	19	18	17	18
AORC03	18	17	17	17
AORC04	18	17	17	17
AORC05	18	18	17	18
AORC06	19	18	17	18
AORC07	19	18	17	18
AORC08	20	18	17	18
AOSA03	18	17	17	17
AOSA04	18	17	17	17
AOSA05	18	17	17	17
AOSA06	18	18	17	18
AOSA07	19	18	17	18
AOSA08	20	18	17	18
AOSA09	20	18	17	18
AOSC03	17	17	17	17
AOSC04	18	17	17	17
AOSC05	18	17	17	17
AOSC06	19	18	17	18
AOSC07	19	18	17	18
AOSC08	20	18	17	18
AOSC09	20	19	17	18
AOTA03	17	17	17	17
AOTA04	18	17	17	17
AOTA05	18	17	17	17
AOTA06	18	18	17	18
AOTA07	20	18	17	18
AOTA08	20	18	17	18
AOTA09	21	19	17	19
AOTC03	17	17	17	17
AOTC04	18	17	17	17
AOTC05	18	17	17	17
AOTC06	19	18	17	18
AOTC07	20	18	17	18
AOTC08	20	18	17	18
AOTC09	21	19	17	19

SPRING CODE	SPRING NO.			
	1	2	3	4
09 SIZE UNITS				
FORA03	17	17	17	17
FORA04	19	17	17	17
FORA05	19	17	17	17
FORA06	18	18	17	17
FORA07	19	18	17	17
FORA08	19	18	17	17
FORA09	20	18	18	18
FORC03	18	18	17	17
FORC04	18	18	17	17
FORC05	19	18	17	17
FORC06	19	18	17	17
FORC07	20	18	17	18
FORC08	20	19	17	18
FORC09	21	19	17	18
FOSA03	18	17	17	17
FOSA04	18	17	17	17
FOSA05	18	17	17	17
FOSA06	19	18	17	17
FOSA07	19	18	17	17
FOSA08	20	18	17	18
FOSA09	20	18	17	18
FOSC03	18	17	17	17
FOSC04	18	17	17	17
FOSC05	18	17	17	17
FOSC06	19	18	17	17
FOSC07	19	18	17	18
FOSC08	20	18	17	18
FOSC09	21	19	17	18
FOTA03	18	17	17	17
FOTA04	18	17	17	17
FOTA05	19	18	17	17
FOTA06	19	18	17	17
FOTA07	20	18	17	18
FOTA08	20	18	17	18
FOTA09	21	19	17	18
FOTC03	18	17	17	17
FOTC04	18	17	17	17
FOTC05	18	18	17	17
FOTC06	19	18	17	17
FOTC07	20	18	17	18
FOTC08	20	18	17	18

SPRING CODE	SPRING NO.			
	1	2	3	4
FOTC09	22	19	17	18
AORA03	17	17	17	17
AORA04	18	17	17	17
AORA05	18	17	17	17
AORA06	18	18	17	17
AORA07	19	18	17	17
AORA08	19	18	17	18
AORA09	20	18	17	18
AORC03	18	18	17	17
AORC04	18	18	17	17
AORC05	19	18	17	17
AORC06	19	18	17	17
AORC07	20	18	17	18
AORC08	29	19	17	18
AORC09	21	19	17	18
AOSA03	18	17	17	17
AOSA04	18	17	17	17
AOSA05	18	17	17	17
AOSA06	19	18	17	17
AOSA07	19	18	17	17
AOSA08	20	18	17	18
AOSA09	20	18	17	18
AOSC03	18	17	17	17
AOSC04	18	17	17	17
AOSC05	18	17	17	17
AOSC06	19	18	17	17
AOSC07	19	18	17	18
AOSC08	20	18	17	18
AOSC09	21	18	17	18
AOTA03	18	17	17	17
AOTA04	18	17	17	17
AOTA05	19	18	17	17
AOTA06	19	18	17	17
AOTA07	20	18	17	18
AOTA08	20	18	17	18
AOTA09	21	19	17	18
AOTC03	18	17	17	17
AOTC04	18	17	17	17
AOTC05	18	18	17	17
AOTC06	19	18	17	17
AOTC07	20	18	17	18
AOTC08	20	18	17	18
AOTC09	22	19	17	18



ISOLATION SPRINGS SELECTION CHART

39NX

PART NUMBER 39NA500143__

SIZE: 07-92

LAST TWO DIGITS OF PART NUMBER FROM CHART

SERIES: 0

SPRING CODE	SPRING NO.			
	1	2	3	4
11 SIZE UNITS				
FORA03	18	17	17	17
FORA04	18	17	17	17
FORA05	18	17	17	17
FORA06	18	18	17	17
FORA07	19	18	17	17
FORA08	19	18	17	18
FORA09	20	18	17	18
FORA10	21	19	17	18
FORC03	18	18	17	17
FORC04	18	18	17	17
FORC05	19	18	17	17
FORC06	19	18	17	18
FORC07	20	18	17	18
FORC08	20	19	17	18
FORC09	21	19	17	18
FORC10	22	20	17	19
FOSA03	18	18	17	17
FOSA04	18	18	17	17
FOSA05	18	18	17	17
FOSA06	19	18	17	17
FOSA07	19	18	17	17
FOSA08	20	18	17	18
FOSA09	20	18	17	18
FOSA10	22	19	17	18
FOSC03	18	17	17	17
FOSC04	18	18	17	17
FOSC05	18	18	17	17
FOSC06	19	18	17	17
FOSC07	19	18	17	18
FOSC08	20	19	17	18
FOSC09	21	19	17	18
FOSC10	22	20	17	18
FOTA03	18	17	17	17
FOTA04	18	18	17	17
FOTA05	19	18	17	17
FOTA06	19	18	17	17
FOTA07	20	18	17	18
FOTA08	20	19	17	18
FOTA09	21	19	17	18
FOTA10	22	20	17	18

SPRING CODE	SPRING NO.			
	1	2	3	4
FOTC03	18	17	17	17
FOTC04	18	18	17	17
FOTC05	18	18	17	17
FOTC06	19	18	17	17
FOTC07	20	19	17	18
FOTC08	20	19	17	18
FOTC09	22	19	17	18
FOTC10	22	19	17	18
AORA03	18	17	17	17
AORA04	18	17	17	17
AORA05	18	17	17	17
AORA06	18	18	17	17
AORA07	19	18	17	17
AORA08	19	18	17	18
AORA09	20	18	17	18
AORA10	21	19	17	18
AORC03	18	18	17	17
AORC04	18	18	17	17
AORC05	19	18	17	17
AORC06	19	18	17	18
AORC07	20	18	17	18
AORC08	20	19	17	18
AORC09	21	19	17	18
AORC10	22	20	17	19
AOSA03	18	18	17	17
AOSA04	18	18	17	17
AOSA05	18	18	17	17
AOSA06	19	18	17	17
AOSA07	19	18	17	17
AOSA08	20	18	17	18
AOSA09	20	18	17	18
AOSA10	22	19	17	18
AOSC03	18	17	17	17
AOSC04	18	18	17	17
AOSC05	18	18	17	17
AOSC06	19	18	17	17
AOSC07	19	18	17	18
AOSC08	20	19	17	18
AOSC09	21	19	17	18
AOSC10	22	20	17	18
AOTA03	18	17	17	17
AOTA04	18	18	17	17
AOTA05	19	18	17	17
AOTA06	19	18	17	17

SPRING CODE	SPRING NO.			
	1	2	3	4
AOTA07	20	18	17	18
AOTA08	20	19	17	18
AOTA09	21	19	17	18
AOTA10	22	20	17	18
AOTC03	18	17	17	17
AOTC04	18	18	17	17
AOTC05	18	18	17	17
AOTC06	19	18	17	17
AOTC07	20	19	17	18
AOTC08	20	19	17	18
AOTC09	22	19	17	18
AOTC10	22	19	17	18
13 SIZE UNITS				
FORA03	18	18	18	18
FORA04	18	18	18	18
FORA05	18	18	18	18
FORA06	19	18	18	18
FORA07	19	18	18	18
FORA08	20	19	17	18
FORA09	20	19	17	19
FORA10	21	19	17	19
FORA11	22	20	17	19
FORC03	19	18	18	18
FORC04	19	18	18	18
FORC05	19	18	18	18
FORC06	20	19	17	18
FORC07	20	19	17	18
FORC08	21	19	17	19
FORC09	21	19	17	19
FORC10	22	20	17	20
FORC11	23	20	17	20
FOSA03	18	18	18	18
FOSA04	19	18	18	18
FOSA05	19	18	18	18
FOSA06	19	18	18	18
FOSA07	19	19	18	18
FOSA08	20	19	17	18
FOSA09	20	19	17	18
FOSA10	22	20	17	19
FOSA11	22	20	17	19
FOSC03	18	18	18	18
FOSC04	19	18	18	18

SPRING CODE	SPRING NO.			
	1	2	3	4
FOSC05	19	18	18	18
FOSC06	19	18	18	18
FOSA07	20	19	17	18
FOSA08	21	19	17	18
FOSA09	21	19	17	18
FOSA10	22	20	17	19
FOSA11	23	20	17	19
FOTA03	18	18	18	18
FOTA04	18	18	18	18
FOTA05	19	18	18	18
FOTA06	19	18	18	18
FOTA07	20	19	17	19
FOTA08	20	19	17	19
FOTA09	22	20	17	19
FOTA10	22	20	17	19
FOTA11	22	20	17	20
FOTC03	18	18	18	18
FOTC04	18	18	18	18
FOTC05	19	18	18	18
FOTC06	20	19	17	18
FOTC07	20	19	17	19
FOTC08	21	19	17	19
FOTC09	22	20	17	19
FOTC10	22	20	17	19
FOTC11	23	20	17	20
AORA03	18	17	17	17
AORA04	18	18	17	17
AORA05	18	18	17	17
AORA06	19	18	17	18
AORA07	19	18	17	18
AORA08	19	18	17	18
AORA09	20	18	17	18
AORA10	21	19	17	18
AORA11	21	19	17	19
AORC03	18	18	17	18
AORC04	18	18	17	18
AORC05	19	18	17	18
AORC06	19	18	17	18
AORC07	20	18	17	18
AORC08	20	19	17	18
AORC09	21	19	17	19
AORC10	22	20	17	19
AORC11	23	20	17	20



ISOLATION SPRINGS SELECTION CHART

39NX

PART NUMBER 39NA500143__
LAST TWO DIGITS OF PART NUMBER FROM CHART

SIZE: 07-92

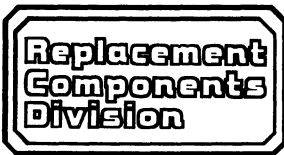
SERIES: 0

SPRING CODE	SPRING NO.			
	1	2	3	4
13 SIZE UNITS CONTINUED				
AOSA03	18	18	17	17
ASOA04	18	18	17	17
AOSA05	18	18	17	17
AOSA06	19	18	17	18
AOSA07	19	18	17	18
AOSA08	20	18	17	18
AOSA09	20	18	17	18
AOSA10	22	19	17	19
AOSA11	22	20	17	19
AOSC03	18	18	17	17
AOSC04	18	18	17	17
AOSC05	18	18	17	18
AOSC06	19	18	17	18
AOSC07	19	18	17	18
AOSC08	20	19	17	18
AOSC09	21	19	17	18
AOSC10	22	19	17	19
AOSC11	22	20	17	19
AOTA03	18	18	17	17
AOTA04	18	18	17	17
AOTA05	19	18	17	18
AOTA06	19	18	17	18
AOTA07	20	19	17	18
AOTA08	20	19	17	18
AOTA09	21	19	17	19
AOTA10	22	19	17	19
AOTA11	22	20	17	19
AOTC03	18	18	17	17
AOTC04	18	18	17	17
AOTC05	19	18	17	18
AOTC06	19	18	17	18
AOTC07	20	19	17	18
AOTC08	20	19	17	18
AOTC09	22	19	17	19
AOTC10	22	19	17	19
AOTC11	23	20	17	20

SPRING CODE	SPRING NO.			
	1	2	3	4
17 SIZE UNITS				
FORA03	18	18	18	18
FORA04	18	18	18	18
FORA05	19	18	18	18
FORA06	19	19	18	18
FORA07	19	19	18	18
FORA08	20	19	18	19
FORA09	20	19	18	19
FORA10	21	20	18	19
FORA11	22	20	18	19
FORC03	19	19	18	18
FORC04	19	19	18	18
FORC05	19	19	18	18
FORC06	20	19	18	19
FORC07	20	19	18	19
FORC08	21	19	18	19
FORC09	22	20	18	19
FORC10	23	20	18	20
FORC11	23	21	18	20
FOSA03	19	18	18	18
FOSA04	19	18	18	18
FOSA05	19	18	18	18
FOSA06	19	19	18	18
FOSA07	20	19	18	19
FOSA08	20	19	18	19
FOSA09	20	19	18	19
FOSA10	22	20	18	20
FOSA11	22	20	18	20
FOSC03	18	18	18	18
FOSC04	19	18	18	18
FOSC05	19	18	18	18
FOSC06	20	19	18	19
FOSC07	20	19	18	19
FOSC08	21	19	18	19
FOSC09	21	20	18	19
FOSC10	22	20	18	20
FOSC11	23	20	18	20
FOTA03	18	18	18	18
FOTA04	19	18	18	18
FOTA05	19	19	18	18
FOTA06	19	19	18	18
FOTA07	20	19	18	19
FOTA08	21	19	18	19

SPRING CODE	SPRING NO.			
	1	2	3	4
FOTA09	22	20	18	19
FOTA10	22	20	18	20
FOTA11	22	20	18	20
FOTC03	19	18	18	18
FOTC04	19	18	18	18
FOTC05	19	19	18	18
FOTC06	20	19	18	19
FOTC07	21	19	18	19
FOTC08	21	19	18	19
FOTC09	22	20	18	20
FOTC10	22	20	18	20
FOTC11	23	21	18	20
AORA03	18	18	18	18
AORA04	18	18	18	18
AORA05	19	18	18	18
AORA06	19	19	18	18
AORA07	19	19	18	18
AORA08	20	19	18	19
AORA09	20	19	18	19
AORA10	21	20	18	19
AORA11	22	20	18	19
AORC03	19	19	18	18
AORC04	19	19	18	18
AORC05	19	19	18	18
AORC06	20	19	18	19
AORC07	20	19	18	19
AORC08	21	19	18	19
AORC09	21	20	18	19
AORC10	23	20	18	20
AORC11	23	21	18	20
AOSA03	19	18	18	18
AOSA04	19	18	18	18
AOSA05	19	18	18	18
AOSA06	19	19	18	18
AOSA07	20	19	18	19
AOSA08	20	19	18	19
AOSA09	20	19	18	19
AOSA10	22	19	18	20
AOSA11	22	20	18	20
AOSC03	18	18	18	18
AOSC04	19	18	18	18
AOSC05	19	18	18	18
AOSC06	20	19	18	19
AOSC07	20	19	18	19

SPRING CODE	SPRING NO.			
	1	2	3	4
AOSC08	21	19	18	19
AOSC09	21	20	18	19
AOSC10	22	20	18	20
AOSC11	23	20	18	20
AOTA03	18	18	18	18
AOTA04	19	18	18	18
AOTA05	19	19	18	18
AOTA06	19	19	18	18
AOTA07	20	19	18	19
AOTA08	21	19	18	19
AOTA09	22	20	18	19
AOTA10	22	20	18	20
AOTA11	22	20	18	20
AOTC03	19	18	18	18
AOTC04	19	18	18	18
AOTC05	19	19	18	18
AOTC06	20	19	18	19
AOTC07	21	19	18	19
AOTC08	21	19	18	19
AOTC09	22	20	18	20
AOTC10	22	20	18	20
AOTC11	23	21	18	20
21 SIZE UNITS				
FORA03	10	10	10	10
FORA04	10	10	10	10
FORA05	10	10	10	10
FORA06	10	10	10	10
FORA07	10	10	10	10
FORA08	11	10	10	11
FORA09	11	10	10	11
FORA10	11	11	10	11
FORA11	12	11	10	11
FORA12	12	11	10	11
FORA13	12	11	10	11
FORC03	10	10	10	10
FORC04	10	10	10	10
FORC05	10	10	10	10
FORC06	11	10	10	10
FORC07	11	10	10	11
FORC08	11	11	10	11
FORC09	12	11	10	11



ISOLATION SPRINGS SELECTION CHART

39NX

PART NUMBER 39NA500143__
LAST TWO DIGITS OF PART NUMBER FROM CHART

SIZE: 07-92

SERIES: 0

SPRING CODE	SPRING NO.			
	1	2	3	4
21 SIZE UNITS CONTINUED				
FORC10	12	11	10	11
FORC11	13	11	10	11
FORC12	13	11	10	11
FORC13	13	11	10	11
FOSA03	10	10	10	10
FOSA04	10	10	10	10
FOSA05	10	10	10	10
FOSA06	10	10	10	10
FOSA07	10	10	10	10
FOSA08	11	10	10	11
FOSA09	11	10	10	11
FOSA10	12	11	10	11
FOSA11	12	11	10	11
FOSA12	12	11	10	11
FOSA13	13	11	10	11
FOSC03	10	10	10	10
FOSC04	10	10	10	10
FOSC05	10	10	10	10
FOSC06	10	10	10	10
FOSC07	11	10	10	11
FOSC08	11	11	10	11
FOSC09	11	11	10	11
FOSC10	12	11	10	11
FOSC11	12	11	10	11
FOSC12	13	11	10	11
FOSC13	13	11	10	11
FOTA03	10	10	10	10
FOTA04	10	10	10	10
FOTA05	10	10	10	10
FOTA06	10	10	10	10
FOTA07	11	10	10	11
FOTA08	11	11	10	11
FOTA09	12	11	10	11
FOTA10	12	11	10	11
FOTA11	12	11	10	11
FOTA12	13	12	10	11
FOTA13	13	12	10	12
FOTC03	10	10	10	10
FOTC04	10	10	10	10
FOTC05	10	10	10	10
FOTC06	10	10	10	10
FOTC07	11	11	10	11

SPRING CODE	SPRING NO.			
	1	2	3	4
FOTC08	11	11	10	11
FOTC09	12	11	10	11
FOTC10	12	11	10	11
FOTC11	13	11	10	11
FOTC12	13	11	10	11
FOTC13	13	12	10	12
AORA03	10	10	10	10
AORA04	10	10	10	10
AORA05	10	10	10	10
AORA06	10	10	10	10
AORA07	10	10	10	10
AORA08	11	10	10	10
AORA09	11	10	10	11
AORA10	11	11	10	11
AORA11	12	11	10	11
AORA12	12	11	10	11
AORA13	12	11	10	11
AORC03	10	10	10	10
AORC04	10	10	10	10
AORC05	10	10	10	10
AORC06	11	10	10	10
AORC07	11	10	10	11
AORC08	11	11	10	11
AORC09	11	11	10	11
AORC10	12	11	10	11
AORC11	13	11	10	11
AORC12	13	11	10	11
AORC13	13	11	10	11
AOSA03	10	10	10	10
AOSA04	10	10	10	10
AOSA05	10	10	10	10
AOSA06	10	10	10	10
AOSA07	10	10	10	10
AOSA08	11	10	10	11
AOSA09	11	10	10	11
AOSA10	12	11	10	11
AOSA11	12	11	10	11
AOSA12	12	11	10	11
AOSA13	13	11	10	11
AOSC03	10	10	10	10
AOSC04	10	10	10	10
AOSC05	10	10	10	10
AOSC06	10	10	10	10
AOSC07	11	10	10	10
AOSC08	11	11	10	11

SPRING CODE	SPRING NO.			
	1	2	3	4
AOSC09	11	11	10	11
AOSC10	12	11	10	11
AOSC11	12	11	10	11
AOSC12	13	11	10	11
AOSC13	13	11	10	11
AOTA03	10	10	10	10
AOTA04	10	10	10	10
AOTA05	10	10	10	10
AOTA06	10	10	10	10
AOTA07	11	10	10	11
AOTA08	11	10	10	11
AOTA09	12	11	10	11
AOTA10	12	11	10	11
AOTA11	12	11	10	11
AOTA12	13	12	10	11
AOTA13	13	12	10	12
AOTC03	10	10	10	10
AOTC04	10	10	10	10
AOTC05	10	10	10	10
AOTC06	10	10	10	10
AOTC07	11	10	10	11
AOTC08	11	11	10	11
AOTC09	12	11	10	11
AOTC10	12	11	10	11
AOTC11	13	11	10	11
AOTC12	13	11	10	11
AOTC13	13	12	10	12
26 SIZE UNITS				
FORA03	10	10	10	10
FORA04	10	10	10	10
FORA05	10	10	10	10
FORA06	10	10	10	10
FORA07	10	10	10	10
FORA08	11	10	10	10
FORA09	11	10	10	10
FORA10	11	10	10	11
FORA11	12	11	10	11
FORA12	12	11	10	11
FORA13	12	11	10	11
FORC03	10	10	10	10
FORC04	10	10	10	10
FORC05	10	10	10	10
FORC06	10	10	10	10

SPRING CODE	SPRING NO.			
	1	2	3	4
FORC07	11	10	10	10
FORC08	11	10	10	10
FORC09	11	11	10	11
FORC10	12	11	09	11
FORC11	13	11	09	11
FORC12	13	11	09	11
FORC13	13	11	09	11
FOSA03	10	10	10	10
FOSA04	10	10	10	10
FOSA05	10	10	10	10
FOSA06	10	10	10	10
FOSA07	10	10	10	10
FOSA08	11	10	10	10
FOSA09	11	10	10	10
FOSA10	12	11	10	11
FOSA11	12	11	10	11
FOSA12	12	11	09	11
FOSA13	13	11	09	11
FOSC03	10	10	10	10
FOSC04	10	10	10	10
FOSC05	10	10	10	10
FOSC06	10	10	10	10
FOSC07	11	10	10	10
FOSC08	11	10	10	10
FOSC09	11	10	10	11
FOSC10	12	11	10	11
FOSC11	12	11	09	11
FOSC12	13	11	09	11
FOSC13	13	11	09	11
FOTA03	10	10	10	10
FOTA04	10	10	10	10
FOTA05	10	10	10	10
FOTA06	10	10	10	10
FOTA07	11	10	10	10
FOTA08	11	10	10	10
FOTA09	12	11	10	11
FOTA10	12	11	10	11
FOTA11	12	11	10	11
FOTA12	13	11	09	11
FOTA13	13	11	09	11
FOTC03	10	10	10	10
FOTC04	10	10	10	10
FOTC05	10	10	10	10
FOTC06	10	10	10	10
FOTC07	11	10	10	10



ISOLATION SPRINGS SELECTION CHART

39NX

PART NUMBER 39NA500143__

SIZE: 07-92

LAST TWO DIGITS OF PART NUMBER FROM CHART

SERIES: 0

SPRING CODE	SPRING NO.			
	1	2	3	4
26 SIZE UNITS CONTINUED				
FOTC08	11	10	10	10
FOTC09	12	11	10	11
FOTC10	12	11	10	11
FOTC11	13	11	09	11
FOTC12	13	11	09	11
FOTC13	14	11	09	11
AORA03	10	10	10	10
AORA04	10	10	10	10
AORA05	10	10	10	10
AORA06	10	10	10	10
AORA07	10	10	10	10
AORA08	11	10	10	11
AORA09	11	10	10	10
AORA10	11	11	10	11
AORA11	12	11	10	11
AORA12	12	11	10	11
AORA13	12	11	10	11
AORC03	10	10	10	10
AORC04	10	10	10	10
AORC05	10	10	10	10
AORC06	11	10	10	10
AORC07	11	10	10	11
AORC08	11	11	10	11
AORC09	11	11	10	11
AORC10	12	11	10	11
AORC11	13	11	10	11
AORC12	13	11	10	11
AORC13	13	11	10	11
AOSA03	10	10	10	10
AOSA04	10	10	10	10
AOSA05	10	10	10	10
AOSA06	10	10	10	10
AOSA07	10	10	10	10
AOSA08	11	10	10	11
AOSA09	11	10	10	11
AOSA10	12	11	10	11
AOSA11	12	11	10	11
AOSA12	12	11	10	11
AOSA13	13	11	09	11
AOSC03	10	10	10	10
AOSC04	10	10	10	10
AOSC05	10	10	10	10

SPRING CODE	SPRING NO.			
	1	2	3	4
AOSC06	10	10	10	10
AOSC07	11	10	10	10
AOSC08	11	11	10	11
AOSC09	11	11	10	11
AOSC10	12	11	10	11
AOSC11	12	11	10	11
AOSC12	13	11	10	11
AOSC13	13	11	10	11
AOTA03	10	10	10	10
AOTA04	10	10	10	10
AOTA05	10	10	10	10
AOTA06	10	10	10	10
AOTA07	11	10	10	11
AOTA08	11	11	10	11
AOTA09	12	11	10	11
AOTA10	12	11	10	11
AOTA11	12	11	10	11
AOTA12	13	11	10	11
AOTA13	14	12	10	12
AOTC03	10	10	10	10
AOTC04	10	10	10	10
AOTC05	10	10	10	10
AOTC06	11	10	10	10
AOTC07	11	11	10	11
AOTC08	11	11	10	11
AOTC09	12	11	10	11
AOTC10	12	11	10	11
AOTC11	13	11	10	11
AOTC12	13	11	10	11
AOTC13	14	12	10	12
32 SIZE UNITS				
FORA06	13	13	13	13
FORA07	13	13	13	13
FORA08	13	13	13	13
FORA09	13	13	13	13
FORA10	13	13	13	13
FORA11	13	13	13	13
FORA12	14	13	13	13
FORA13	14	13	13	13
FORA14	14	14	13	13
FORA15	14	14	13	13

SPRING CODE	SPRING NO.			
	1	2	3	4
FORC06	13	13	13	13
FORC07	13	13	13	13
FORC08	13	13	13	13
FORC09	13	13	13	13
FORC10	14	14	13	13
FORC11	14	14	13	13
FORC12	14	14	13	13
FORC13	14	14	13	13
FORC14	15	14	13	13
FORC15	15	14	13	13
FOSA06	13	13	13	13
FOSA07	13	13	13	13
FOSA08	13	13	13	13
FOSA09	13	13	13	13
FOSA10	14	13	13	13
FOSA11	14	13	13	13
FOSA12	14	14	13	13
FOSA13	14	14	13	13
FOSA14	15	14	13	13
FOSA15	15	14	13	13
FOSC06	13	13	13	13
FOSC07	13	13	13	13
FOSC08	13	13	13	13
FOSC09	13	13	13	13
FOSC10	14	13	13	13
FOSC11	14	14	13	13
FOSC12	14	14	13	13
FOSC13	14	14	13	13
FOSA14	15	14	13	13
FOSC15	15	14	13	13
FOTA06	13	13	13	13
FOTA07	13	13	13	13
FOTA08	13	13	13	13
FOTA09	13	13	13	13
FOTA10	14	13	13	13
FOTA11	14	13	13	13
FOTA12	14	14	13	13
FOTA13	15	14	13	13
FOTA14	15	14	13	13
FOTC06	13	13	13	13
FOTC07	13	13	13	13
FOTC08	13	13	13	13
FOTC09	14	13	13	13
FOTC10	14	13	13	13
FOTC11	14	13	13	13

SPRING CODE	SPRING NO.			
	1	2	3	4
FOTC12	15	14	13	13
FOTC13	15	14	13	13
FOTC14	15	14	13	13
FMRA06	14	14	14	13
FMRA07	14	14	14	13
FMRA08	14	14	14	13
FMRA09	14	14	14	13
FMRA10	14	14	14	13
FMRA11	14	14	14	13
FMRA12	15	15	14	13
FMRA13	15	15	14	13
FMRA14	15	15	14	13
FMRA15	15	15	14	13
FMRC06	14	14	14	13
FMRC07	14	14	14	13
FMRC08	14	14	14	13
FMRC09	14	14	14	13
FMRC10	15	15	14	13
FMRC11	15	15	14	13
FMRC12	15	15	14	13
FMRC13	15	15	14	13
FMRC14	16	16	14	13
FMRC15	16	16	14	13
FMSA06	14	14	14	13
FMSA07	14	14	14	13
FMSA08	14	14	14	13
FMSA09	14	14	14	13
FMSA10	15	15	14	13
FMSA11	15	15	14	13
FMSA12	15	15	14	13
FMSA13	15	15	14	13
FMSA14	16	16	14	13
FMSA15	16	16	14	13
FMSC06	14	14	14	13
FMSC07	14	14	14	13
FMSC08	14	14	14	13
FMSC09	14	14	14	13
FMSC10	15	15	14	13
FMSC11	15	15	14	13
FMSC12	15	15	14	13
FMSC13	15	15	14	13
FMSC14	16	16	14	13
FMSC15	16	16	14	13



ISOLATION SPRINGS SELECTION CHART

39NX

SIZE: 07-92

PART NUMBER 39NA500143__

LAST TWO DIGITS OF PART NUMBER FROM CHART

SERIES: 0

SPRING CODE	SPRING NO.			
	1	2	3	4
32 SIZE UNITS CONTINUED				
AORA06	13	13	13	13
AORA07	13	13	13	13
AORA08	13	13	13	13
AORA09	13	13	13	13
AORA10	13	13	13	13
AORA11	14	14	13	13
AORA12	14	14	13	13
AORA13	14	14	13	13
AORA14	14	14	13	13
AORA15	15	14	13	13
AORA16	15	14	13	13
AORC06	13	13	13	13
AORC07	13	13	13	13
AORC08	13	13	13	13
AORC09	14	13	13	13
AORC10	14	14	13	13
AORC11	14	14	13	13
AORC12	15	14	13	14
AORC13	14	14	13	13
AORC14	15	14	13	14
AORC15	15	14	13	14
AORC16	16	15	13	14
AOSA06	13	13	13	13
AOSA07	13	13	13	13
AOSA08	13	13	13	13
AOSA09	13	13	13	13
AOSA10	14	14	13	13
AOSA11	14	14	13	13
AOSA12	14	14	13	13
AOSA13	14	14	13	13
AOSA14	15	14	13	14
AOSA15	15	14	13	14
AOSA16	16	15	13	14
AOSC06	13	13	13	13
AOSC07	13	13	13	13
AOSC08	13	13	13	13
AOSC09	13	13	13	13
AOSC10	14	14	13	13
AOSC11	14	14	13	13
AOSC12	14	14	13	13

SPRING CODE	SPRING NO.			
	1	2	3	4
AOSC13	14	14	13	13
AOSC14	15	14	13	14
AOSC15	15	14	13	14
AOSC16	16	15	13	14
AOTA05	13	13	13	13
AOTA06	13	13	13	13
AOTA07	13	13	13	13
AOTA08	13	13	13	13
AOTA09	14	14	13	13
AOTA10	14	14	13	13
AOTA11	14	14	13	13
AOTA12	15	14	13	14
AOTA13	15	14	13	14
AOTA14	15	14	13	14
AOTC06	13	13	13	13
AOTC07	13	13	13	13
AOTC08	13	13	13	13
AOTC09	14	14	13	13
AOTC10	14	14	13	13
AOTC11	14	14	13	13
AOTC12	14	14	13	13
AOTC13	15	14	13	14
AOTC14	15	14	13	14
AOTC15	16	15	13	14
AMRA06	14	14	14	13
AMRA07	14	14	14	13
AMRA08	14	14	14	13
AMRA09	14	14	14	13
AMRA10	14	14	14	13
AMRA11	15	15	14	13
AMRA12	15	15	14	13
AMRA13	15	15	14	13
AMRA14	15	15	14	13
AMRA15	16	16	14	13
AMRA16	16	16	14	14
AMRC06	14	14	14	13
AMRC07	14	14	14	13
AMRC08	14	14	14	13
AMRC09	15	15	14	13
AMRC10	15	15	14	13
AMRC11	15	15	14	13
AMRC12	16	16	14	14
AMRC13	15	15	14	13
AMRC14	16	16	14	14
AMRC15	16	16	14	14

SPRING CODE	SPRING NO.			
	1	2	3	4
AMSA06	14	14	14	13
AMSA07	14	14	14	13
AMSA08	14	14	14	13
AMSA09	14	14	14	13
AMSA10	15	15	14	13
AMSA11	15	15	14	13
AMSA12	15	15	14	13
AMSA13	15	15	14	13
AMSA14	16	16	14	14
AMSA15	16	16	14	14
AMSC06	14	14	14	13
AMSC07	14	14	14	13
AMSC08	14	14	14	13
AMSC09	14	14	14	13
AMSC10	15	15	14	13
AMSC11	15	15	14	13
AMSC12	15	15	14	13
AMSC13	15	15	14	13
AMSC14	16	16	14	14
AMSC15	16	16	14	14
39 SIZE UNITS				
FORA06	13	13	13	13
FORA07	13	13	13	13
FORA08	13	13	13	13
FORA09	13	13	13	13
FORA10	14	13	13	13
FORA11	14	14	13	13
FORA12	14	14	13	13
FORA13	14	14	13	13
FORA14	14	14	13	13
FORA15	14	14	13	13
FORA16	15	14	13	13
FORC06	13	13	13	13
FORC07	13	13	13	13
FORC08	13	13	13	13
FORC09	14	13	13	13
FORC10	14	14	13	13
FORC11	14	14	13	13
FORC12	15	14	13	13
FORC13	15	14	13	13
FORC14	15	14	13	13
FORC15	15	14	13	13
FORC16	16	15	13	14

SPRING CODE	SPRING NO.			
	1	2	3	4
FOSA06	13	13	13	13
FOSA07	13	13	13	13
FOSA08	13	13	13	13
FOSA09	13	13	13	13
FOSA10	14	14	13	13
FOSA11	14	14	13	13
FOSA12	14	14	13	13
FOSA13	14	14	13	13
FOSA14	15	14	13	13
FOSA15	15	14	13	13
FOSA16	16	15	13	14
FOSC06	13	13	13	13
FOSC07	13	13	13	13
FOSC08	13	13	13	13
FOSC09	14	13	13	13
FOSC10	14	14	13	13
FOSC11	14	14	13	13
FOSC12	14	14	13	13
FOSC13	15	14	13	13
FOSC14	15	14	13	13
FOSC15	15	14	13	13
FOSC16	16	15	13	14
FOTA05	13	13	13	13
FOTA06	13	13	13	13
FOTA07	13	13	13	13
FOTA08	13	13	13	13
FOTA09	14	14	13	13
FOTA10	14	14	13	13
FOTA11	14	14	13	13
FOTA12	15	14	13	13
FOTA13	15	14	13	13
FOTA14	15	14	13	13
FOTA15	15	14	13	13
FOTC06	13	13	13	13
FOTC07	13	13	13	13
FOTC08	13	13	13	13
FOTC09	14	14	13	13
FOTC10	14	14	13	13
FOTC11	14	14	13	13
FOTC12	14	14	13	13
FOTC13	15	14	13	13
FOTC14	15	14	13	13
FOTC15	16	15	13	14



ISOLATION SPRINGS SELECTION CHART

39NX

PART NUMBER 39NA500143__

SIZE: 07-92

LAST TWO DIGITS OF PART NUMBER FROM CHART

SERIES: 0

SPRING CODE	SPRING NO.			
	1	2	3	4
39 SIZE UNITS CONTINUED				
FMRA06	14	14	14	13
FMRA07	14	14	14	13
FMRA08	14	14	14	13
FMRA09	14	14	14	13
FMRA10	15	15	14	13
FMRA11	15	15	14	13
FMRA12	15	15	14	13
FMRA13	15	15	14	13
FMRA14	15	15	14	13
FMRA15	15	15	14	13
FMRA16	16	16	14	13
FMRC06	14	14	14	13
FMRC07	14	14	14	13
FMRC08	14	14	14	13
FMRC09	15	15	14	13
FMRC10	15	15	14	13
FMRC11	15	15	14	13
FMRC12	16	16	14	13
FMRC13	16	16	14	13
FMRC14	16	16	14	13
FMRC15	16	16	14	13
FMSA06	14	14	14	13
FMSA07	14	14	14	13
FMSA08	14	14	14	13
FMSA09	14	14	14	13
FMSA10	15	15	14	13
FMSA11	15	15	14	13
FMSA12	15	15	14	13
FMSA13	15	15	14	13
FMSA14	16	16	14	13
FMSA15	16	16	14	13
FMSC06	14	14	14	13
FMSC07	14	14	14	13
FMSC08	14	14	14	13
FMSC09	15	15	14	13
FMSC10	15	15	14	13
FMSC11	15	15	14	13
FMSC12	15	15	14	13
FMSC13	16	16	14	13
FMSC14	16	16	14	13
FMSC15	16	16	14	13

SPRING CODE	SPRING NO.			
	1	2	3	4
AORA06	13	13	13	13
AORA07	13	13	13	13
AORA08	13	14	13	13
AORA09	13	14	13	13
AORA10	14	14	13	13
AORA11	14	14	13	13
AORA12	14	14	13	13
AORA13	14	14	13	13
AORA14	14	14	13	13
AORA15	15	14	13	14
AORA16	15	14	13	14
AORC06	13	14	13	13
AORC07	13	14	13	13
AORC08	14	14	13	13
AORC09	14	14	13	13
AORC10	14	14	13	13
AORC11	14	14	13	13
AORC12	15	14	13	14
AORC13	15	14	13	14
AORC14	15	14	13	14
AORC15	15	14	13	14
AORC16	16	15	13	14
AOSA06	13	13	13	13
AOSA07	13	13	13	13
AOSA08	13	14	13	13
AOSA09	14	14	13	13
AOSA10	14	14	13	13
AOSA11	14	14	13	13
AOSA12	14	14	13	13
AOSA13	14	14	13	13
AOSA14	15	14	13	14
AOSA15	15	14	13	14
AOSA16	16	15	13	14
AOSC06	13	13	13	13
AOSC07	14	14	13	13
AOSC08	14	14	13	13
AOSC09	14	14	13	13
AOSC10	14	14	13	13
AOSC11	14	14	13	13
AOSC12	14	14	13	13
AOSC13	15	14	13	14
AOSC14	15	14	13	14
AOSC15	15	15	13	14
AOSC16	16	15	13	14

SPRING CODE	SPRING NO.			
	1	2	3	4
AOTA05	13	13	13	13
AOTA06	13	13	13	13
AOTA07	14	14	13	13
AOTA08	14	14	13	13
AOTA09	14	14	13	13
AOTA10	14	14	13	13
AOTA11	14	14	13	13
AOTA12	15	14	13	14
AOTA13	15	14	13	14
AOTA14	15	14	13	14
AOTA15	15	14	14	14
AOTC06	13	13	13	13
AOTC07	14	14	13	13
AOTC08	14	14	13	13
AOTC09	14	14	13	13
AOTC10	14	14	13	13
AOTC11	14	14	13	13
AOTC12	14	14	13	13
AOTC13	15	14	13	14
AOTC14	15	15	13	14
AOTC15	16	15	13	14
AMRA06	14	14	14	13
AMRA07	14	14	14	13
AMRA08	14	14	14	13
AMRA09	14	14	14	13
AMRA10	15	15	14	13
AMRA11	15	15	14	13
AMRA12	15	15	14	13
AMRA13	15	15	14	13
AMRA14	15	15	14	13
AMRA15	16	16	14	14
AMRA16	16	16	14	14
AMRC06	14	14	14	13
AMRC07	14	14	14	13
AMRC08	15	15	14	13
AMRC09	15	15	14	13
AMRC10	15	15	14	13
AMRC11	15	15	14	13
AMRC12	16	16	14	14
AMRC13	16	16	14	14
AMRC14	16	16	14	14
AMRC15	16	16	14	14
AMSA06	14	14	14	13
AMSA07	14	14	14	13
AMSA08	14	14	14	13

SPRING CODE	SPRING NO.			
	1	2	3	4
AMSA09	15	15	14	13
AMSA10	15	15	14	13
AMSA11	15	15	14	13
AMSA12	15	15	14	13
AMSA13	15	15	14	13
AMSA14	16	16	14	14
AMSA15	16	16	14	14
AMSC06	14	14	14	13
AMSC07	14	14	14	13
AMSC08	15	15	14	13
AMSC09	15	15	14	13
AMSC10	15	15	14	13
AMSC11	15	15	14	13
AMSC12	15	15	14	13
AMSC13	16	16	14	14
AMSC14	16	16	14	14
AMSC15	16	16	14	14
49 SIZE UNITS				
FORA06	02	02	01	01
FORA07	02	02	01	01
FORA08	02	02	01	01
FORA09	02	02	01	01
FORA10	02	02	01	01
FORA11	02	02	01	02
FORA12	03	02	01	02
FORA13	03	02	01	02
FORA14	03	02	01	02
FORA15	03	03	01	02
FORA16	04	03	01	02
FORA17	04	03	01	02
FORC06	02	02	01	01
FORC07	02	02	01	01
FORC08	02	02	01	01
FORC09	02	02	01	01
FORC10	03	02	01	02
FORC11	03	02	01	02
FORC12	03	03	01	02
FORC13	03	03	01	02
FORC14	04	03	01	02
FORC15	04	03	01	02
FORC16	05	03	01	03



ISOLATION SPRINGS SELECTION CHART

39NX

PART NUMBER 39NA500143__
LAST TWO DIGITS OF PART NUMBER FROM CHART

SIZE: 07-92

SERIES: 0

SPRING CODE	SPRING NO.			
	1	2	3	4
49 SIZE UNITS CONTINUED				
FOSA06	02	02	01	01
FOSA07	02	02	01	01
FOSA08	02	02	01	01
FOSA09	02	02	01	01
FOSA10	03	02	01	02
FOSA11	03	02	01	02
FOSA12	03	02	01	02
FOSA13	03	02	01	02
FOSA14	04	03	01	02
FOSA15	04	03	01	02
FOSA16	05	03	01	03
FOSA17	05	03	01	03
FOSC06	02	02	01	01
FOSC07	02	02	01	01
FOSC08	02	02	01	01
FOSC09	02	02	01	01
FOSC10	03	02	01	02
FOSC11	03	02	01	02
FOSC12	03	02	01	02
FOSC13	03	03	01	02
FOSC14	04	03	01	02
FOSC15	04	03	01	02
FOSC16	05	03	01	03
FOTA05	02	02	01	01
FOTA06	02	02	01	01
FOTA07	02	02	01	01
FOTA08	02	02	01	01
FOTA09	02	02	01	02
FOTA10	03	02	01	02
FOTA11	03	02	01	02
FOTA12	03	03	01	02
FOTA13	04	03	01	02
FOTA14	04	03	01	02
FOTA15	04	03	01	03
FOTC06	02	02	01	01
FOTC07	02	02	01	01
FOTC08	02	02	01	01
FOTC09	03	02	01	02
FOTC10	03	02	01	02
FOTC11	03	02	01	02
FOTC12	03	02	01	02

SPRING CODE	SPRING NO.			
	1	2	3	4
FOTC13	04	03	01	02
FOTC14	04	03	01	02
FOTC15	05	03	01	03
FMRA06	03	03	02	01
FMRA07	03	03	02	01
FMRA08	03	03	02	01
FMRA09	03	03	02	01
FMRA10	03	03	02	01
FMRA11	03	03	02	02
FMRA12	04	04	02	02
FMRA13	04	04	02	02
FMRA14	04	04	02	02
FMRA15	04	04	02	02
FMRA16	05	05	02	02
FMRA17	05	05	02	02
FMRC06	03	03	02	01
FMRC07	03	03	02	01
FMRC08	03	03	02	01
FMRC09	03	03	02	01
FMRC10	04	04	02	02
FMRC11	04	04	02	02
FMRC12	04	04	02	02
FMRC13	04	04	02	02
FMRC14	05	05	02	02
FMRC15	05	05	02	02
FMRC16	06	06	02	03
FMSA06	03	03	02	01
FMSA07	03	03	02	01
FMSA08	03	03	02	01
FMSA09	03	03	02	01
FMSA10	04	04	02	02
FMSA11	04	04	02	02
FMSA12	04	04	02	02
FMSA13	04	04	02	02
FMSA14	05	05	02	02
FMSA15	05	05	02	02
FMSA16	06	06	02	03
FMSA17	06	06	02	03
FMSC06	03	03	02	01
FMSC07	03	03	02	01
FMSC08	03	03	02	01
FMSC09	03	03	02	01
FMSC10	04	04	02	02

SPRING CODE	SPRING NO.			
	1	2	3	4
FMSC11	04	04	02	02
FMSC12	04	04	02	02
FMSC13	04	04	02	02
FMSC14	05	05	02	02
FMSC15	05	05	02	02
FMSC16	06	06	02	03
AORA06	02	02	02	02
AORA07	02	02	02	02
AORA08	02	02	02	02
AORA09	02	02	02	02
AORA10	03	03	02	02
AORA11	03	03	02	02
AORA12	03	03	02	02
AORA13	03	03	02	02
AORA14	03	03	02	02
AORA15	04	03	02	03
AORA16	04	03	02	03
AORA17	04	03	02	03
AORC06	02	02	02	02
AORC07	02	02	02	02
AORC08	03	03	02	02
AORC09	03	03	02	02
AORC10	03	03	02	02
AORC11	03	03	02	02
AORC12	04	03	02	03
AORC13	04	03	02	03
AORC14	04	03	02	03
AORC15	04	03	02	03
AORC16	05	04	02	03
AOSA06	02	02	02	02
AOSA07	02	02	02	02
AOSA08	02	02	02	02
AOSA09	02	02	02	02
AOSA10	03	03	02	02
AOSA11	03	03	02	02
AOSA12	03	03	02	02
AOSA13	03	03	02	02
AOSA14	04	03	02	03
AOSA15	04	03	02	03
AOSA16	05	03	02	03
AOSA17	05	03	02	03
AOSC06	02	02	02	02
AOSC07	02	02	02	02
AOSC08	03	03	02	02
AOSC09	03	03	02	02

SPRING CODE	SPRING NO.			
	1	2	3	4
AOSC10	03	03	02	02
AOSC11	03	03	02	02
AOSC12	03	03	02	02
AOSC13	04	03	03	03
AOSC14	04	03	03	03
AOSC15	04	03	03	03
AOSC16	05	04	03	03
AOTA05	02	02	02	02
AOTA06	02	02	02	02
AOTA07	02	02	02	02
AOTA08	03	03	02	02
AOTA09	03	03	02	02
AOTA10	03	03	02	02
AOTA11	03	03	02	02
AOTA12	04	03	02	03
AOTA13	04	03	02	03
AOTA14	04	03	02	03
AOTA15	05	04	02	03
AOTC06	02	02	02	02
AOTC07	03	03	02	02
AOTC08	03	03	02	02
AOTC09	03	03	02	02
AOTC10	03	03	02	02
AOTC11	03	03	02	02
AOTC12	03	03	02	02
AOTC13	04	03	02	03
AOTC14	04	03	02	03
AOTC15	05	04	02	03
AMRA06	03	03	03	02
AMRA07	03	03	03	02
AMRA08	03	03	03	02
AMRA09	03	03	03	02
AMRA10	04	04	03	02
AMRA11	04	04	03	02
AMRA12	04	04	03	02
AMRA13	04	04	03	02
AMRA14	04	04	03	02
AMRA15	05	05	03	03
AMRA16	05	05	03	03
AMRA17	05	05	03	03
AMRA18	06	06	03	03



ISOLATION SPRINGS SELECTION CHART

39NX

PART NUMBER 39NA500143__

SIZE: 07-92

LAST TWO DIGITS OF PART NUMBER FROM CHART

SERIES: 0

SPRING CODE	SPRING NO.			
	1	2	3	4
49 SIZE UNITS CONTINUED				
AMRC06	03	03	03	02
AMRC07	03	03	03	02
AMRC08	04	04	03	02
AMRC09	04	04	03	02
AMRC10	04	04	03	02
AMRC11	04	04	03	02
AMRC12	05	05	03	03
AMRC13	05	05	03	03
AMRC14	05	05	03	03
AMRC15	05	05	03	03
AMRC16	06	06	03	03
AMSA06	03	03	03	02
AMSA07	03	03	03	02
AMSA08	03	03	03	02
AMSA09	03	03	03	02
AMSA10	04	04	03	02
AMSA11	04	04	03	02
AMSA12	04	04	03	02
AMSA13	04	04	03	02
AMSA14	05	05	03	03
AMSA15	05	05	03	03
AMSA16	06	06	03	03
AMSA17	06	06	03	03
AMSA18	07	07	03	03
AMSC06	03	03	03	02
AMSC07	03	03	03	02
AMSC08	04	04	03	02
AMSC09	04	04	03	02
AMSC10	04	04	03	02
AMSC11	04	04	03	02
AMSC12	04	04	03	02
AMSC13	05	05	03	03
AMSC14	05	05	03	03
AMSC15	05	05	03	03
AMSC16	06	06	03	03
61 SIZE UNITS				
FORA06	02	02	02	02
FORA07	02	02	02	02
FORA08	02	02	02	02
FORA09	02	02	02	02
FORA10	03	02	02	02

SPRING CODE	SPRING NO.			
	1	2	3	4
FORA11	03	02	02	02
FORA12	03	02	02	02
FORA13	03	03	02	02
FORA14	03	03	02	02
FORA15	03	03	02	02
FORA16	04	03	02	03
FORA17	04	03	02	03
FORA18	05	03	02	03
FORC06	02	02	02	02
FORC07	02	02	02	02
FORC08	02	02	02	02
FORC09	03	02	02	02
FORC10	03	03	02	02
FORC11	03	03	02	02
FORC12	04	03	02	02
FORC13	04	03	02	02
FORC14	04	03	02	03
FORC15	04	03	02	02
FORC16	05	03	02	03
FOSA06	02	02	02	02
FOSA07	02	02	02	02
FOSA08	02	02	02	02
FOSA09	02	02	02	02
FOSA10	03	02	02	02
FOSA11	03	03	02	02
FOSA12	03	03	02	02
FOSA13	03	03	02	02
FOSA14	04	03	02	03
FOSA15	04	03	02	03
FOSA16	05	03	02	03
FOSA17	05	03	02	03
FOSA18	06	04	02	03
FOSC06	02	02	02	02
FOSC07	02	02	02	02
FOSC08	02	02	02	02
FOSC09	03	02	02	02
FOCS10	03	02	02	02
FOSC11	03	03	02	02
FOSC12	03	03	02	02
FOSC13	04	03	02	02
FOSC14	04	03	02	03
FOSC15	04	03	02	03
FOSC16	05	03	02	03

SPRING CODE	SPRING NO.			
	1	2	3	4
FOTA05	02	02	02	02
FOTA06	02	02	02	02
FOTA07	02	02	02	02
FOTA08	02	02	02	02
FOTA09	03	02	02	02
FOTA10	03	02	02	02
FOTA11	03	03	02	02
FOTA12	04	03	02	03
FOTA13	04	03	02	03
FOTA14	04	03	02	03
FOTA15	05	03	02	03
FOTC06	02	02	02	02
FOTC07	02	02	02	02
FOTC08	02	02	02	02
FOTC09	03	02	02	02
FOTC10	03	02	02	02
FOTC11	03	03	02	02
FOTC12	03	03	02	02
FOTC13	04	03	02	03
FOTC14	04	03	02	03
FOTC15	05	04	02	03
FMRA06	03	03	03	02
FMRA07	03	03	03	02
FMRA08	03	03	03	02
FMRA09	03	03	03	02
FMRA10	04	04	03	02
FMRA11	04	04	03	02
FMRA12	04	04	03	02
FMRA13	04	04	03	02
FMRA14	04	04	03	02
FMRA15	04	04	03	02
FMRA16	05	05	03	03
FMRA17	05	05	03	03
FMRA18	06	06	03	03
FMRC06	03	03	03	02
FMRC07	03	03	03	02
FMRC08	03	03	03	02
FMRC09	04	04	03	02
FMRC10	04	04	03	02
FMRC11	04	04	03	02
FMRC12	05	05	03	02
FMRC13	05	05	03	02
FMRC14	05	05	03	03
FMRC15	05	05	03	02
FMRC16	06	06	03	03

SPRING CODE	SPRING NO.			
	1	2	3	4
FMSA06	03	03	03	02
FMSA07	03	03	03	02
FMSA08	03	03	03	02
FMSA09	03	03	03	02
FMSA10	04	04	03	02
FMSA11	04	04	03	02
FMSA12	04	04	03	02
FMSA13	04	04	03	02
FMSA14	05	05	03	03
FMSA15	05	05	03	03
FMSA16	06	06	03	03
FMSA17	06	06	03	03
FMSA18	07	07	03	03
FMSC06	03	03	03	02
FMSC07	03	03	03	02
FMSC08	03	03	03	02
FMSC09	04	04	03	02
FMSC10	04	04	03	02
FMSC11	04	04	03	02
FMSC12	04	04	03	02
FMSC13	05	05	03	02
FMSC14	05	05	03	03
FMSC15	05	05	03	03
FMSC16	06	06	03	03
AORA07	03	03	03	02
AORA08	03	03	03	02
AORA09	03	03	03	02
AORA10	03	03	03	03
AORA11	03	03	03	03
AORA12	03	03	03	03
AORA13	03	03	03	03
AORA14	04	03	03	03
AORA15	04	03	03	03
AORA16	04	04	03	03
AORA17	04	04	02	03
AORA18	05	04	02	03
AORC07	03	03	03	02
AORC08	03	03	03	03
AORC09	03	03	03	03
AORC10	03	03	03	03
AORC11	04	03	03	03
AORC12	04	04	03	03
AORC13	04	03	03	03
AORC14	04	04	02	03
AORC15	04	04	02	03
AORC16	05	04	02	03



ISOLATION SPRINGS SELECTION CHART

39NX

PART NUMBER 39NA500143__
LAST TWO DIGITS OF PART NUMBER FROM CHART

SIZE: 07-92

SERIES: 0

SPRING CODE	SPRING NO.			
	1	2	3	4
61 SIZE UNITS CONTINUED				
AOSA07	03	03	03	02
AOSA08	03	03	03	02
AOSA09	03	03	03	02
AOSA10	03	03	03	03
AOSA11	03	03	03	03
AOSA12	03	03	03	03
AOSA13	04	03	03	03
AOSA14	04	04	02	03
AOSA15	04	04	02	03
AOSA16	05	04	02	03
AOSA17	05	04	02	03
AOSA18	06	04	02	04
AOSC07	03	03	03	02
AOSC08	03	03	03	02
AOSC09	03	03	03	03
AOSC10	03	03	03	03
AOSC11	04	03	03	03
AOSC12	04	03	03	03
AOSC13	04	03	03	03
AOSC14	04	04	02	03
AOSC15	04	04	02	03
AOSC16	05	04	02	03
AOTA07	03	03	03	02
AOTA08	03	03	03	02
AOTA09	03	03	03	03
AOTA10	03	03	03	03
AOTA11	03	03	03	03
AOTA12	04	04	03	03
AOTA13	04	04	03	03
AOTA14	04	04	02	03
AOTA15	05	04	02	03
AOTC07	03	03	03	02
AOTC08	03	03	03	02
AOTC09	03	03	03	03
AOTC10	03	03	03	03
AOTC11	04	03	03	03
AOTC12	04	04	03	03
AOTC13	04	04	02	03
AOTC14	04	04	02	03
AOTC15	05	04	02	04

SPRING CODE	SPRING NO.			
	1	2	3	4
AMRA07	04	04	04	02
AMRA08	04	04	04	02
AMRA09	04	04	04	02
AMRA10	04	04	04	03
AMRA11	04	04	04	03
AMRA12	04	04	04	03
AMRA13	04	04	04	03
AMRA14	05	05	04	03
AMRA15	05	05	04	03
AMRA16	05	05	04	03
AMRA17	05	05	03	03
AMRA18	06	06	03	03
AMRC07	04	04	04	02
AMRC08	04	04	04	03
AMRC09	04	04	04	03
AMRC10	04	04	04	03
AMRC11	05	05	04	03
AMRC12	05	05	04	03
AMRC13	05	05	04	03
AMRC14	05	05	04	03
AMRC15	05	05	03	03
AMRC16	06	06	03	03
AMSA07	04	04	04	02
AMSA08	04	04	04	02
AMSA09	04	04	04	02
AMSA10	04	04	04	03
AMSA11	04	04	04	03
AMSA12	04	04	04	03
AMSA13	05	05	04	03
AMSA14	05	05	03	03
AMSA15	05	05	03	03
AMSA16	06	06	03	03
AMSA17	06	06	03	03
AMSA18	07	07	03	04
AMSC07	04	04	04	02
AMSC08	04	04	04	02
AMSC09	04	04	04	03
AMSC10	04	04	04	03
AMSC11	05	05	04	03
AMSC12	05	05	04	03
AMSC13	05	05	04	03
AMSC14	05	05	03	03
AMSC15	05	05	03	03
AMSC16	06	06	03	03

SPRING CODE	SPRING NO.			
	1	2	3	4
74 SIZE UNITS				
AORA07	04	04	03	03
AORA08	04	04	03	03
AORA09	04	04	03	03
AORA10	04	04	03	03
AORA11	04	04	03	03
AORA12	04	04	03	03
AORA13	04	04	03	03
AORA14	04	04	03	03
AORA15	04	04	03	03
AORA16	04	04	03	04
AORA17	05	04	03	04
AORA18	05	04	03	04
AORA19	06	05	03	04
AORC07	04	04	03	03
AORC08	04	04	03	03
AORC09	04	04	03	03
AORC10	04	04	03	03
AORC11	04	04	03	03
AORC12	04	04	03	03
AORC13	04	04	03	03
AORC14	04	04	03	04
AORC15	05	04	03	04
AORC16	06	05	03	04
AORC17	06	05	03	04
AORC18	07	05	03	05
AORC19	08	06	03	05
AOSA07	03	03	03	03
AOSA08	03	03	03	03
AOSA09	03	03	03	03
AOSA10	04	04	03	03
AOSA11	04	04	03	03
AOSA12	04	04	03	30
AOSA13	04	04	03	03
AOSA14	05	04	03	04
AOSA15	05	04	03	04
AOSA16	05	04	03	04
AOSA17	06	05	03	04
AOSA18	06	05	03	04
AOSA19	06	05	03	04
AOSC07	03	03	03	03
AOSC08	03	03	03	03
AOSC09	03	04	03	03
AOSC10	04	04	03	03

SPRING CODE	SPRING NO.			
	1	2	3	4
AOSC11	04	04	03	03
AOSC12	04	04	03	03
AOSC13	04	04	03	03
AOSC14	05	04	03	04
AOSC15	05	04	03	04
AOSC16	06	05	03	04
AOSC17	06	05	03	04
AOSC18	07	05	03	05
AOSC19	08	06	03	05
AOTA13	05	04	03	04
AOTA14	05	04	03	04
AOTA15	06	05	03	04
AOTC07	03	03	03	03
AOTC08	04	03	03	03
AOTC09	04	04	03	03
AOTC10	04	04	03	03
AOTC11	04	04	03	03
AOTC12	04	04	03	03
AOTC13	05	04	03	04
AOTC14	05	04	03	04
AOTC15	06	05	03	04
AMRA07	05	05	04	03
AMRA08	05	05	04	03
AMRA09	05	05	04	03
AMRA10	05	05	04	03
AMRA11	05	05	04	03
AMRA12	05	05	04	03
AMRA13	05	05	04	03
AMRA14	05	05	04	03
AMRA15	05	05	04	03
AMRA16	05	05	04	04
AMRA17	06	06	04	04
AMRA18	06	06	04	04
AMRA19	07	07	04	04
AMRC07	05	05	04	03
AMRC08	05	05	04	03
AMRC09	05	05	04	03
AMRC10	05	05	04	03
AMRC11	05	05	04	03
AMRC12	05	05	04	03
AMRC13	05	05	04	03
AMRC14	05	05	04	04
AMRC15	06	06	04	04



ISOLATION SPRINGS SELECTION CHART

39NX

PART NUMBER 39NA500143_ _

SIZE: 07-92

LAST TWO DIGITS OF PART NUMBER FROM CHART

SERIES: 0

SPRING CODE	SPRING NO.			
	1	2	3	4
74 SIZE UNITS CONTINUED				
AMRC16	07	07	04	04
AMRC17	07	07	04	04
AMRC18	08	08	04	05
AMRC19	09	09	04	05
AMSA07	04	04	04	03
AMSA08	04	04	04	03
AMSA09	04	04	04	03
AMSA10	05	05	04	03
AMSA11	05	05	04	03
AMSA12	05	05	04	03
AMSA13	05	05	04	03
AMSA14	06	06	04	04
AMSA15	06	06	04	04
AMSA16	06	06	04	04
AMSA17	07	07	04	04
AMSA18	07	07	04	04
AMSA19	07	07	04	04
AMSC07	04	04	04	03
AMSC08	04	04	04	03
AMSC09	04	04	04	03
AMSC10	05	05	04	03
AMSC11	05	05	04	03
AMSC12	05	05	04	03
AMSC13	05	05	04	03
AMSC14	06	06	04	04
AMSC15	06	06	04	04
AMSC16	07	07	04	04
AMSC17	07	07	04	04
AMSC18	08	08	04	05
AMSC19	09	09	04	05
92 SIZE UNITS				
AORA08	02	05	05	02
AORA09	02	05	05	02
AORA10	02	05	05	02
AORA11	02	05	05	02
AORA12	03	05	05	02
AORA13	03	05	05	02
AORA14	03	05	05	03

SPRING CODE	SPRING NO.			
	1	2	3	4
AORA15	03	05	05	03
AORA16	04	05	05	03
AORA17	04	06	05	03
AORA18	04	06	04	03
AORA19	05	06	04	03
AORC08	02	05	05	02
AORC09	02	05	05	02
AORC10	03	05	05	02
AORC11	03	05	05	03
AORC12	03	05	05	03
AORC13	03	05	05	03
AORC14	04	05	05	03
AORC15	04	06	05	03
AORC16	05	06	04	03
AORC17	05	06	04	04
AORC18	06	06	04	04
AORC19	07	07	04	04
AOSA08	02	05	05	02
AOSA09	02	05	05	02
AOSA10	03	05	05	02
AOSA11	03	05	05	02
AOSA12	03	05	05	02
AOSA13	03	05	05	03
AOSA14	04	05	05	03
AOSA15	04	06	05	03
AOSA16	05	06	04	03
AOSA17	05	06	04	03
AOSA18	05	06	04	04
AOSA19	06	06	04	04
AOSC08	02	05	05	02
AOSC09	02	05	05	02
AOSC10	03	05	05	02
AOSC11	03	05	05	02
AOSC12	03	05	05	03
AOSC13	03	05	05	03
AOSC14	04	06	05	03
AOSC15	04	06	05	03
AOSC16	05	06	04	03
AOSC17	05	06	04	04
AOSC18	06	06	04	04
AOSC19	07	07	04	05

SPRING CODE	SPRING NO.			
	1	2	3	4
AOTA07	02	05	05	02
AOTA08	02	05	05	02
AOTA09	02	05	05	02
AOTA10	03	05	05	02
AOTA11	03	05	05	02
AOTA12	03	05	05	03
AOTA13	04	05	05	03
AOTA14	04	05	05	03
AOTA15	03	05	05	03
AOTC07	02	05	05	02
AOTC08	02	05	05	02
AOTC09	03	05	05	02
AOTC10	03	05	05	02
AOTC11	03	05	05	03
AOTC12	03	05	05	03
AOTC13	04	05	05	03
AOTC14	04	06	05	03
AOTC15	05	06	04	03
AMRA08	03	03	06	02
AMRA09	03	03	06	02
AMRA10	03	03	06	02
AMRA11	03	03	06	02
AMRA12	04	04	06	02
AMRA13	04	04	06	02
AMRA14	04	04	06	03
AMRA15	04	04	06	03
AMRA16	05	05	06	03
AMRA17	05	05	06	03
AMRA18	05	05	05	03
AMRA19	06	06	05	03
AMRC08	03	03	06	02
AMRC09	03	03	06	02
AMRC10	04	04	06	02
AMRC11	04	04	06	03
AMRC12	04	04	06	03
AMRC13	04	04	06	03
AMRC14	05	05	06	03
AMRC15	05	05	06	03
AMRC16	06	06	05	03
AMRC17	06	06	05	04
AMRC18	07	07	05	04
AMRC19	08	08	05	04

SPRING CODE	SPRING NO.			
	1	2	3	4
AMSA08	03	03	06	02
AMSA09	03	03	06	02
AMSA10	04	04	06	02
AMSA11	04	04	06	02
AMSA12	04	04	06	02
AMSA13	04	04	06	03
AMSA14	05	05	06	03
AMSA15	05	05	06	03
AMSA16	06	06	05	03
AMSA17	06	06	05	03
AMSA18	06	06	05	04
AMSA19	07	07	05	04
AMSC08	03	03	06	02
AMSC09	03	03	06	02
AMSC10	04	04	06	02
AMSC11	04	04	06	02
AMSC12	04	04	06	03
AMSC13	04	04	06	03
AMSC14	05	05	06	03
AMSC15	05	05	06	03
AMSC16	06	06	05	03
AMSC17	06	06	05	04
AMSC18	07	07	05	04
AMSC19	08	08	05	05